

DATASHEET

Kallikrein 3 Mouse Monoclonal Antibody(C3622)

CAT. NO. AMA03234

KEY FEATURES

Target	Kallikrein 3	Source / Host	Mouse
Reactivity	Human	Clonality	Monoclonal
Applications	WB	Conjugation	Unconjugated
Form / Buffer	Mouse IgM. Liquid in PBS, pH 7.3, 30% glycerol, and 0.01% sodium azide.	Storage	at-20°C

BACKGROUND

Hydrolyzes semenogelin-1 thus leading to the liquefaction of the seminal coagulum.

APPLICATION

To ensure optimal assay performance, AREX recommends conducting reagent titration tailored to each testing system for optimal detection results.

WB	1:500 - 1:1000
----	----------------

*Results are sample-specific. Please refer to your local assay conditions and test parameters for reference.

PRODUCT OVERVIEW

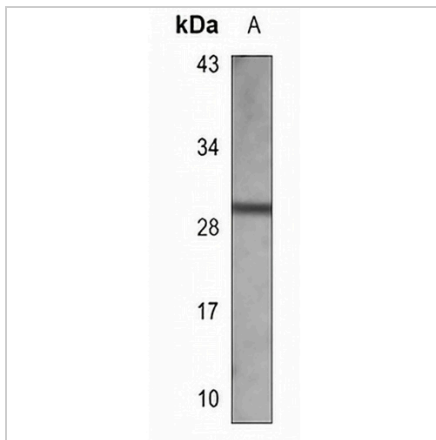
Description	Mouse monoclonal antibody to Kallikrein 3
Specificity	Recognizes endogenous levels of Kallikrein 3 protein.
Antibody Type	Primary antibody
Immunogen	KLH-conjugated synthetic peptide encompassing a sequence within the center region of human Kallikrein 3. The exact sequence is proprietary.
Purification	This antibody is purified through a protein G column.
Molecular Weight	Predicted: 28 kD; Observed: 29 kD
Form/Buffer	Mouse IgM. Liquid in PBS, pH 7.3, 30% glycerol, and 0.01% sodium azide.
Alternative Names	APS; Prostate-specific antigen; PSA; Gamma-seminoprotein; Semin; Kallikrein-3; P-30 antigen; Semenogelase
Gene Symbol	KLK3
Entrez Gene	354(Human)
SwissProt	P07288(Human)

*AREX continuously optimizes our products. Webpage content may not reflect the latest updates. For inquiries, please contact info@arexbio.com or your local distributor.

*Clone Number, Reactivity, Source/Host and Clonality can be found in the product name and Key Features section above.

DATASHEET**Kallikrein 3 Mouse Monoclonal Antibody(C3622)**

CAT. NO. AMA03234

DATA

Western blot analysis of Kallikrein 3 expression in MDAMB231 (A) whole cell lysates.
(Predicted band size: 28 kD; Observed band size: 29 kD)

STORAGE

Store at 4°C short term. For long term storage, store at -20°C, avoiding freeze/thaw cycles.

NOTE

For Research Use Only. Not for diagnostic, therapeutics, prophylactic or in vivo use.