

DATASHEET

CD3e Mouse Monoclonal Antibody(C3628)

CAT. NO. AMA03240

KEY FEATURES

Target	CD3e	Source / Host	Mouse
Reactivity	Mouse	Clonality	Monoclonal
Applications	WB	Conjugation	Unconjugated
Form / Buffer	Mouse IgG2a. Supplied in crude ascites with 0.01% sodium azide.	Storage	at-20°C

BACKGROUND

The protein encoded by this gene is the CD3-epsilon polypeptide, which together with CD3-gamma, -delta and -zeta, and the T-cell receptor alpha/beta and gamma/delta heterodimers, forms the T-cell receptor-CD3 complex. This complex plays an important role in coupling antigen recognition to several intracellular signal-transduction pathways. The genes encoding the epsilon, gamma and delta polypeptides are located in the same cluster on chromosome 11. The epsilon polypeptide plays an essential role in T-cell development. Defects in this gene cause immunodeficiency. This gene has also been linked to a susceptibility to type I diabetes in women.

APPLICATION

To ensure optimal assay performance, AREX recommends conducting reagent titration tailored to each testing system for optimal detection results.

WB	1:500 - 1:1000
----	----------------

*Results are sample-specific. Please refer to your local assay conditions and test parameters for reference.

PRODUCT OVERVIEW

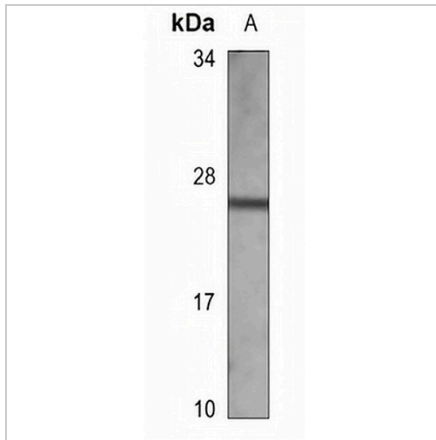
Description	Mouse monoclonal antibody to CD3e
Specificity	Recognizes endogenous levels of CD3e protein.
Antibody Type	Primary antibody
Immunogen	KLH-conjugated synthetic peptide of human CD3e. The exact sequence is proprietary.
Molecular Weight	Predicted: 21 kD; Observed: 27 kD
Form/Buffer	Mouse IgG2a. Supplied in crude ascites with 0.01% sodium azide.
Alternative Names	T3E; T-cell surface glycoprotein CD3 epsilon chain; T-cell surface antigen T3/Leu-4 epsilon chain; CD3e
Gene Symbol	CD3E
Entrez Gene	12501(Mouse)
SwissProt	P22646(Mouse)

*AREX continuously optimizes our products. Webpage content may not reflect the latest updates. For inquiries, please contact info@arexbio.com or your local distributor.

*Clone Number, Reactivity, Source/Host and Clonality can be found in the product name and Key Features section above.

DATASHEET**CD3e Mouse Monoclonal Antibody(C3628)**

CAT. NO. AMA03240

DATA

Western blot analysis of CD3e expression in mouse spleen (A) whole cell lysates.
(Predicted band size: 21 kD; Observed band size: 27 kD)

STORAGE

Store at 4°C short term. For long term storage, store at -20°C, avoiding freeze/thaw cycles.

NOTE

For Research Use Only. Not for diagnostic, therapeutics, prophylactic or in vivo use.