

**DATASHEET**

**HSP90 alpha Mouse Monoclonal Antibody(C3629)**

CAT. NO. AMA03241

**KEY FEATURES**

|               |   |               |              |
|---------------|---|---------------|--------------|
| Target        | HSP90 alpha   | Source / Host | Mouse        |
| Reactivity    | Human, Mouse, Rat   | Clonality     | Monoclonal   |
| Applications  | WB  | Conjugation   | Unconjugated |
| Form / Buffer | Mouse IgG1 lambda. Liquid in PBS, pH 7.3, 30% glycerol, and 0.01% sodium azide. | Storage       | at-20°C      |

**BACKGROUND**

Molecular chaperone that promotes the maturation, structural maintenance and proper regulation of specific target proteins involved for instance in cell cycle control and signal transduction. Undergoes a functional cycle that is linked to its ATPase activity which is essential for its chaperone activity. This cycle probably induces conformational changes in the client proteins, thereby causing their activation. Interacts dynamically with various co-chaperones that modulate its substrate recognition, ATPase cycle and chaperone function . Engages with a range of client protein classes via its interaction with various co-chaperone proteins or complexes, that act as adapters, simultaneously able to interact with the specific client and the central chaperone itself .

**APPLICATION**

To ensure optimal assay performance, AREX recommends conducting reagent titration tailored to each testing system for optimal detection results.

|    |                 |
|----|-----------------|
| WB | 1:1000 - 1:2000 |
|----|-----------------|

\*Results are sample-specific. Please refer to your local assay conditions and test parameters for reference.

**PRODUCT OVERVIEW**

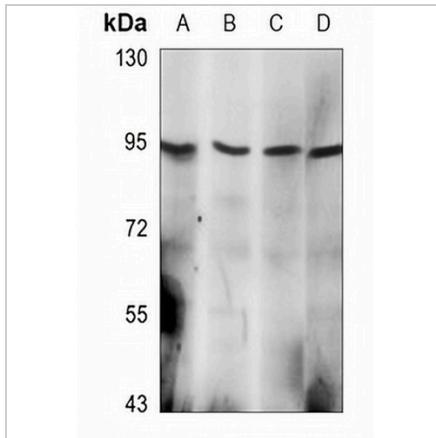
|                   |  |
|-------------------|--|
| Description       | Mouse monoclonal antibody to HSP90 alpha   |
| Specificity       | Recognizes endogenous levels of HSP90 alpha protein.   |
| Antibody Type     | Primary antibody   |
| Immunogen         | KLH-conjugated synthetic peptide encompassing a sequence within the center region of human HSP90 alpha. The exact sequence is proprietary.   |
| Purification      | This antibody is purified through a protein G column.  |
| Molecular Weight  | Predicted: 84 kD; Observed: 90 kD  |
| Form/Buffer       | Mouse IgG1 lambda. Liquid in PBS, pH 7.3, 30% glycerol, and 0.01% sodium azide.  |
| Alternative Names | HSP90A; HSPC1; HSPCA; Heat shock protein HSP 90-alpha; Heat shock 86 kDa; HSP 86; HSP86; Lipopolysaccharide-associated protein 2; LAP-2; LPS-associated protein 2; Renal carcinoma antigen NY-REN-38 |
| Gene Symbol       | HSP90AA1   |
| Entrez Gene       | 3320(Human); 15519(Mouse); 299331(Rat)   |
| SwissProt         | P07900(Human); P07901(Mouse); P82995(Rat)  |

\*AREX continuously optimizes our products. Webpage content may not reflect the latest updates. For inquiries, please contact [info@arexbio.com](mailto:info@arexbio.com) or your local distributor.

\*Clone Number, Reactivity, Source/Host and Clonality can be found in the product name and Key Features section above.

**DATASHEET****HSP90 alpha Mouse Monoclonal Antibody(C3629)**

CAT. NO. AMA03241

**DATA**

Western blot analysis of HSP90 alpha expression in HeLa (A), A431 (B), C6 (C), NIH3T3 (D) whole cell lysates. (Predicted band size: 84 kD; Observed band size: 90 kD)

**STORAGE**

Store at 4°C short term. For long term storage, store at -20°C, avoiding freeze/thaw cycles.

**NOTE**

For Research Use Only. Not for diagnostic, therapeutics, prophylactic or in vivo use.