

DATASHEET

RET Mouse Monoclonal Antibody(C3632)

CAT. NO. AMA03244

KEY FEATURES

Target	RET	Source / Host	Mouse
Reactivity	Human	Clonality	Monoclonal
Applications	WB, IHC, IF/ICC	Conjugation	Unconjugated
Form / Buffer	Mouse IgM kappa. Supplied in crude ascites with 0.01% sodium azide.	Storage	at-20°C

BACKGROUND

Receptor tyrosine-protein kinase involved in numerous cellular mechanisms including cell proliferation, neuronal navigation, cell migration, and cell differentiation in response to glia cell line-derived growth family factors (GDNF, NRTN, ARTN, PSPN and GDF15). In contrast to most receptor tyrosine kinases, RET requires not only its cognate ligands but also coreceptors, for activation. GDNF ligands (GDNF, NRTN, ARTN, PSPN and GDF15) first bind their corresponding GDNFR coreceptors (GFRA1, GFRA2, GFRA3, GFRA4 and GFRAL, respectively), triggering RET autophosphorylation and activation, leading to activation of downstream signaling pathways, including the MAPK- and AKT-signaling pathways.

APPLICATION

To ensure optimal assay performance, AREX recommends conducting reagent titration tailored to each testing system for optimal detection results.

WB	1:500 - 1:5000
IHC	1:50 - 1:200
IF/ICC	1:10 - 1:50

*Results are sample-specific. Please refer to your local assay conditions and test parameters for reference.

PRODUCT OVERVIEW

Description	Mouse monoclonal antibody to RET
Specificity	Recognizes endogenous levels of RET protein.
Antibody Type	Primary antibody
Immunogen	Recombinant fusion protein of human RET. The exact sequence is proprietary.
Molecular Weight	Predicted: 124 kD; Observed: 110 kD
Form/Buffer	Mouse IgM kappa. Supplied in crude ascites with 0.01% sodium azide.
Alternative Names	CDHF12; CDHR16; PTC; RET51; Proto-oncogene tyrosine-protein kinase receptor Ret; Cadherin family member 12; Proto-oncogene c-Ret
Gene Symbol	RET
Entrez Gene	5979(Human)
SwissProt	P07949(Human)

*AREX continuously optimizes our products. Webpage content may not reflect the latest updates. For inquiries, please contact info@arexbio.com or your local distributor.

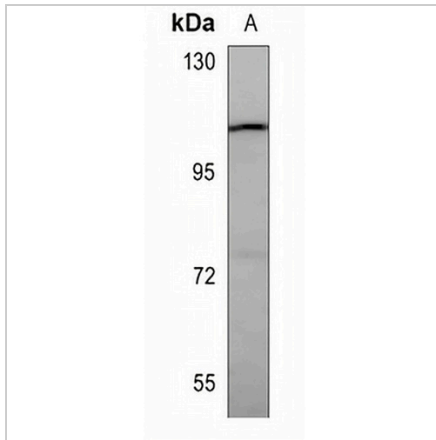
*Clone Number, Reactivity, Source/Host and Clonality can be found in the product name and Key Features section above.

DATASHEET

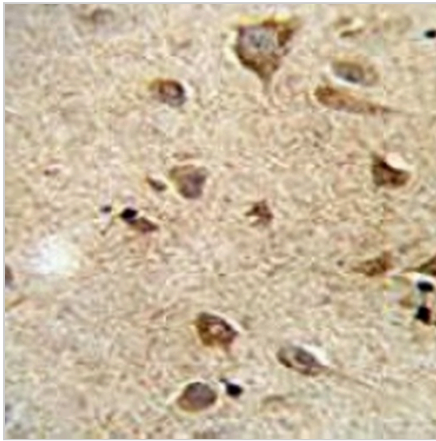
RET Mouse Monoclonal Antibody(C3632)

CAT. NO. AMA03244

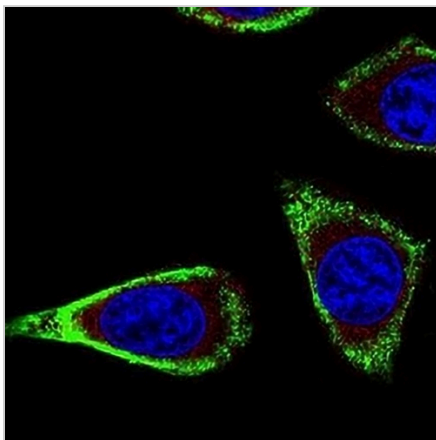
DATA



Western blot analysis of RET expression in A549 (A) whole cell lysates. (Predicted band size: 124 kD; Observed band size: 110 kD)



Immunohistochemical analysis of RET staining in human brain formalin fixed paraffin embedded tissue section. The section was pre-treated using heat mediated antigen retrieval with sodium citrate buffer (pH 6.0). The section was then incubated with the antibody at room temperature and detected using an HRP conjugated compact polymer system. DAB was used as the chromogen. The section was then counterstained with haematoxylin and mounted with DPX.



Immunofluorescent analysis of RET staining in MDAMB231 cells. Formalin-fixed cells were permeabilized with 0.1% Triton X-100 in TBS for 5-10 minutes and blocked with 3% BSA-PBS for 30 minutes at room temperature. Cells were probed with the primary antibody in 3% BSA-PBS and incubated overnight at 4 °C in a humidified chamber. Cells were washed with PBST and incubated with a AREX® Fluor 488 -conjugated secondary antibody (green) in PBS at room temperature in the dark. Phalloidin - AREX® Fluor 555 was used to stain Actin filaments (red). DAPI was used to stain the cell nuclei (blue).

STORAGE

Store at 4°C short term. For long term storage, store at -20°C, avoiding freeze/thaw cycles.

NOTE

For Research Use Only. Not for diagnostic, therapeutics, prophylactic or in vivo use.