

DATASHEET

CD16 Mouse Monoclonal Antibody(C3647)

CAT. NO. AMA03259

KEY FEATURES

Target	CD16	Source / Host	Mouse
Reactivity	Human	Clonality	Monoclonal
Applications	WB	Conjugation	Unconjugated
Form / Buffer	Mouse IgG1. Supplied in crude ascites with 0.01% sodium azide.	Storage	at-20°C

BACKGROUND

Receptor for the invariable Fc fragment of immunoglobulin gamma (IgG). Optimally activated upon binding of clustered antigen-IgG complexes displayed on cell surfaces, triggers lysis of antibody-coated cells, a process known as antibody-dependent cellular cytotoxicity (ADCC). Does not bind free monomeric IgG, thus avoiding inappropriate effector cell activation in the absence of antigenic trigger . Optimally activated upon binding of clustered antigen-IgG complexes displayed on cell surfaces, triggers lysis of antibody-coated cells, a process known as antibody-dependent cellular cytotoxicity (ADCC). Does not bind free monomeric IgG, thus avoiding inappropriate effector cell activation in the absence of antigenic trigger . Mediates IgG effector functions on natural killer (NK) cells.

APPLICATION

To ensure optimal assay performance, AREX recommends conducting reagent titration tailored to each testing system for optimal detection results.

WB	1:500 - 1:1000
----	----------------

*Results are sample-specific. Please refer to your local assay conditions and test parameters for reference.

PRODUCT OVERVIEW

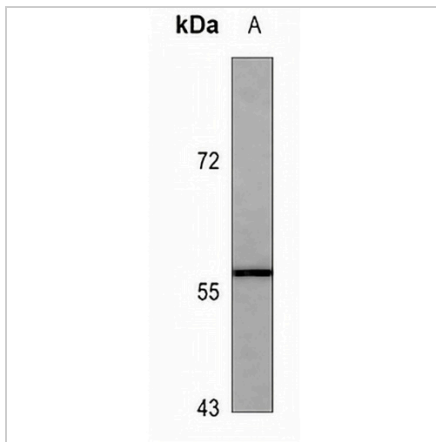
Description	Mouse monoclonal antibody to CD16
Specificity	Recognizes endogenous levels of CD16 protein.
Antibody Type	Primary antibody
Immunogen	KLH-conjugated synthetic peptide encompassing a sequence within the center region of human CD16. The exact sequence is proprietary.
Molecular Weight	Predicted: 29 kD; Observed: 56 kD
Form/Buffer	Mouse IgG1. Supplied in crude ascites with 0.01% sodium azide.
Alternative Names	CD16A; FCG3; FCGR3; IGFR3; Low affinity immunoglobulin gamma Fc region receptor III-A; CD16a antigen; Fc-gamma RIII-alpha; Fc-gamma RIII; Fc-gamma RIIIa; FcRIII; FcRIIIa; FcR-10; IgG Fc receptor III-2; CD16a
Gene Symbol	FCGR3A
Entrez Gene	2214(Human)
SwissProt	P08637(Human)

*AREX continuously optimizes our products. Webpage content may not reflect the latest updates. For inquiries, please contact info@arexbio.com or your local distributor.

*Clone Number, Reactivity, Source/Host and Clonality can be found in the product name and Key Features section above.

DATASHEET**CD16 Mouse Monoclonal Antibody(C3647)**

CAT. NO. AMA03259

DATA

Western blot analysis of CD16 expression in CEM (A) whole cell lysates. (Predicted band size: 29 kD; Observed band size: 56 kD)

STORAGE

Store at 4°C short term. For long term storage, store at -20°C, avoiding freeze/thaw cycles.

NOTE

For Research Use Only. Not for diagnostic, therapeutics, prophylactic or in vivo use.