

DATASHEET

Galectin 1 Mouse Monoclonal Antibody(C3652)

CAT. NO. AMA03264

KEY FEATURES

Target	Galectin 1	Source / Host	Mouse
Reactivity	Human	Clonality	Monoclonal
Applications	WB	Conjugation	Unconjugated
Form / Buffer	Mouse IgG1. Supplied in crude ascites with 0.01% sodium azide.	Storage	at-20°C

BACKGROUND

Lectin that binds beta-galactoside and a wide array of complex carbohydrates. Plays a role in regulating apoptosis, cell proliferation and cell differentiation. Inhibits CD45 protein phosphatase activity and therefore the dephosphorylation of Lyn kinase. Strong inducer of T-cell apoptosis. Plays a negative role in Th17 cell differentiation via activation of the receptor CD69.

APPLICATION

To ensure optimal assay performance, AREX recommends conducting reagent titration tailored to each testing system for optimal detection results.

WB	1:500 - 1:1000
----	----------------

*Results are sample-specific. Please refer to your local assay conditions and test parameters for reference.

PRODUCT OVERVIEW

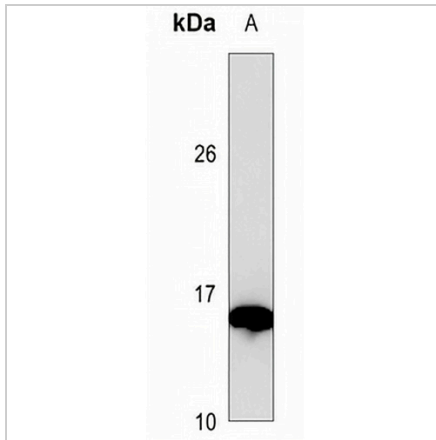
Description	Mouse monoclonal antibody to Galectin 1
Specificity	Recognizes endogenous levels of Galectin 1 protein.
Antibody Type	Primary antibody
Immunogen	Recombinant fusion protein of human Galectin 1. The exact sequence is proprietary.
Molecular Weight	Predicted: 14 kD; Observed: 15 kD
Form/Buffer	Mouse IgG1. Supplied in crude ascites with 0.01% sodium azide.
Alternative Names	Galectin-1; Gal-1; 14 kDa laminin-binding protein; HLBP14; 14 kDa lectin; Beta-galactoside-binding lectin L-14-I; Galaptin; HBL; HPL; Lactose-binding lectin 1; Lectin galactoside-binding soluble 1; Putative MAPK-activating protein PM12; S-Lac lectin 1
Gene Symbol	LGALS1
Entrez Gene	3956(Human)
SwissProt	P09382(Human)

*AREX continuously optimizes our products. Webpage content may not reflect the latest updates. For inquiries, please contact info@arexbio.com or your local distributor.

*Clone Number, Reactivity, Source/Host and Clonality can be found in the product name and Key Features section above.

DATASHEET**Galectin 1 Mouse Monoclonal Antibody(C3652)**

CAT. NO. AMA03264

DATA

Western blot analysis of Galectin 1 expression in A375 (A) whole cell lysates. (Predicted band size: 14 kD; Observed band size: 15 kD)

STORAGE

Store at 4°C short term. For long term storage, store at -20°C, avoiding freeze/thaw cycles.

NOTE

For Research Use Only. Not for diagnostic, therapeutics, prophylactic or in vivo use.