

DATASHEET

PDGFR beta Mouse Monoclonal Antibody(C3654)

CAT. NO. AMA03266

KEY FEATURES

Target	PDGFR beta	Source / Host	Mouse
Reactivity	Mouse	Clonality	Monoclonal
Applications	WB	Conjugation	Unconjugated
Form / Buffer	Mouse IgG1 kappa. Supplied in crude ascites with 0.01% sodium azide.	Storage	at-20°C

BACKGROUND

The protein encoded by this gene is a transmembrane glycoprotein that is a member of the protein kinase superfamily. This protein is a receptor for members of the epidermal growth factor family. EGFR is a cell surface protein that binds to epidermal growth factor, thus inducing receptor dimerization and tyrosine autophosphorylation leading to cell proliferation. Mutations in this gene are associated with lung cancer. EGFR is a component of the cytokine storm which contributes to a severe form of Coronavirus Disease 2019 (COVID-19) resulting from infection with severe acute respiratory syndrome coronavirus-2 (SARS-CoV-2).

APPLICATION

To ensure optimal assay performance, AREX recommends conducting reagent titration tailored to each testing system for optimal detection results.

WB	1:500 - 1:4000
----	----------------

*Results are sample-specific. Please refer to your local assay conditions and test parameters for reference.

PRODUCT OVERVIEW

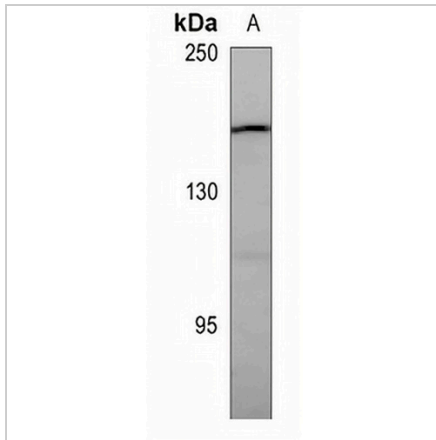
Description	Mouse monoclonal antibody to PDGFR beta
Specificity	Recognizes endogenous levels of PDGFR beta protein.
Antibody Type	Primary antibody
Immunogen	Recombinant fusion protein of human PDGFR beta. The exact sequence is proprietary.
Molecular Weight	Predicted: 122 kD; Observed: 180 kD
Form/Buffer	Mouse IgG1 kappa. Supplied in crude ascites with 0.01% sodium azide.
Alternative Names	PDGFR; PDGFR1; Platelet-derived growth factor receptor beta; PDGF-R-beta; PDGFR-beta; Beta platelet-derived growth factor receptor; Beta-type platelet-derived growth factor receptor; CD140 antigen-like family member B; Platelet-derived growth factor receptor 1; PDGFR-1; CD140b
Gene Symbol	PDGFRB
Entrez Gene	18596(Mouse)
SwissProt	P05622(Mouse)

*AREX continuously optimizes our products. Webpage content may not reflect the latest updates. For inquiries, please contact info@arexbio.com or your local distributor.

*Clone Number, Reactivity, Source/Host and Clonality can be found in the product name and Key Features section above.

DATASHEET**PDGFR beta Mouse Monoclonal Antibody(C3654)**

CAT. NO. AMA03266

DATA

Western blot analysis of PDGFR beta expression in NIH3T3 (A) whole cell lysates.
(Predicted band size: 122 kD; Observed band size: 180 kD)

STORAGE

Store at 4°C short term. For long term storage, store at -20°C, avoiding freeze/thaw cycles.

NOTE

For Research Use Only. Not for diagnostic, therapeutics, prophylactic or in vivo use.