

DATASHEET

Thioredoxin 1 Mouse Monoclonal Antibody(C3658)

CAT. NO. AMA03270

KEY FEATURES

Target	Thioredoxin 1	Source / Host	Mouse
Reactivity	Human	Clonality	Monoclonal
Applications	WB	Conjugation	Unconjugated
Form / Buffer	Mouse IgG1 kappa. Liquid in PBS, pH 7.3, 30% glycerol, and 0.01% sodium azide.	Storage	at-20°C

BACKGROUND

Participates in various redox reactions through the reversible oxidation of its active center dithiol to a disulfide and catalyzes dithiol-disulfide exchange reactions . Plays a role in the reversible S-nitrosylation of cysteine residues in target proteins, and thereby contributes to the response to intracellular nitric oxide. Nitrosylates the active site Cys of CASP3 in response to nitric oxide (NO), and thereby inhibits caspase-3 activity . Induces the FOS/JUN AP-1 DNA-binding activity in ionizing radiation (IR) cells through its oxidation/reduction status and stimulates AP-1 transcriptional activity .

APPLICATION

To ensure optimal assay performance, AREX recommends conducting reagent titration tailored to each testing system for optimal detection results.

WB	1:500 - 1:1000
----	----------------

*Results are sample-specific. Please refer to your local assay conditions and test parameters for reference.

PRODUCT OVERVIEW

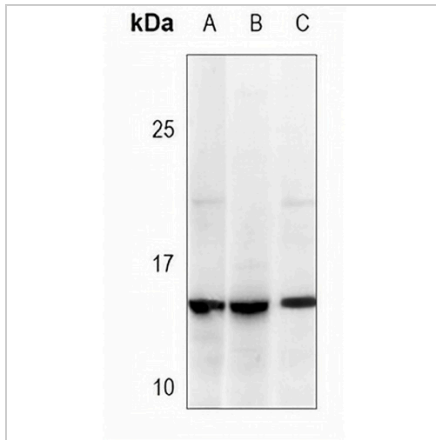
Description	Mouse monoclonal antibody to Thioredoxin 1
Specificity	Recognizes endogenous levels of Thioredoxin 1 protein.
Antibody Type	Primary antibody
Immunogen	Recombinant fusion protein of human Thioredoxin 1. The exact sequence is proprietary.
Purification	This antibody is purified through a protein G column.
Molecular Weight	Predicted: 11 kD; Observed: 12 kD
Form/Buffer	Mouse IgG1 kappa. Liquid in PBS, pH 7.3, 30% glycerol, and 0.01% sodium azide.
Alternative Names	TRDX; TRX; TRX1; Thioredoxin; Trx; ATL-derived factor; ADF; Surface-associated sulphhydryl protein; SASP
Gene Symbol	TXN
Entrez Gene	7295(Human)
SwissProt	P10599(Human)

*AREX continuously optimizes our products. Webpage content may not reflect the latest updates. For inquiries, please contact info@arexbio.com or your local distributor.

*Clone Number, Reactivity, Source/Host and Clonality can be found in the product name and Key Features section above.

DATASHEET**Thioredoxin 1 Mouse Monoclonal Antibody(C3658)**

CAT. NO. AMA03270

DATA

Western blot analysis of Thioredoxin 1 expression in SHSY5Y (A), A431 (B), HeLa (C) whole cell lysates. (Predicted band size: 11 kD; Observed band size: 12 kD)

STORAGE

Store at 4°C short term. For long term storage, store at -20°C, avoiding freeze/thaw cycles.

NOTE

For Research Use Only. Not for diagnostic, therapeutics, prophylactic or in vivo use.