

**DATASHEET**

**CD143 Mouse Monoclonal Antibody(C3674)**

CAT. NO. AMA03286

**KEY FEATURES**

|               |   |               |              |
|---------------|---|---------------|--------------|
| Target        | CD143   | Source / Host | Mouse        |
| Reactivity    | Mouse   | Clonality     | Monoclonal   |
| Applications  | WB  | Conjugation   | Unconjugated |
| Form / Buffer | Mouse IgG2a. Supplied in crude ascites with 0.01% sodium azide. | Storage       | at-20°C      |

**BACKGROUND**

This gene encodes an enzyme involved in blood pressure regulation and electrolyte balance. It catalyzes the conversion of angiotensin I into a physiologically active peptide angiotensin II. Angiotensin II is a potent vasopressor and aldosterone-stimulating peptide that controls blood pressure and fluid-electrolyte balance. This angiotensin converting enzyme (ACE) also inactivates the vasodilator protein, bradykinin. Accordingly, the encoded enzyme increases blood pressure and is a drug target of ACE inhibitors, which are often prescribed to reduce blood pressure. This enzyme additionally plays a role in fertility through its ability to cleave and release GPI-anchored membrane proteins in spermatozoa.

**APPLICATION**

To ensure optimal assay performance, AREX recommends conducting reagent titration tailored to each testing system for optimal detection results.

|    |                |
|----|----------------|
| WB | 1:500 - 1:4000 |
|----|----------------|

\*Results are sample-specific. Please refer to your local assay conditions and test parameters for reference.

**PRODUCT OVERVIEW**

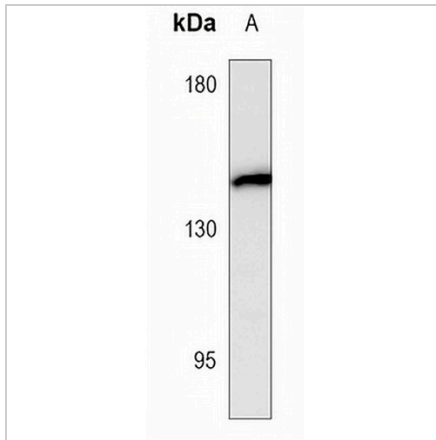
|                   |  |
|-------------------|--|
| Description       | Mouse monoclonal antibody to CD143   |
| Specificity       | Recognizes endogenous levels of CD143 protein.   |
| Antibody Type     | Primary antibody   |
| Immunogen         | KLH-conjugated synthetic peptide encompassing a sequence within the C-term region of human CD143. The exact sequence is proprietary. |
| Molecular Weight  | Predicted: 150 kD; Observed: 150 kD  |
| Form/Buffer       | Mouse IgG2a. Supplied in crude ascites with 0.01% sodium azide.  |
| Alternative Names | DCP; DCP1; Angiotensin-converting enzyme; ACE; Dipeptidyl carboxypeptidase I; Kininase II; CD143                                     |
| Gene Symbol       | ACE  |
| Entrez Gene       | 11421(Mouse)   |
| SwissProt         | P09470(Mouse)  |

\*AREX continuously optimizes our products. Webpage content may not reflect the latest updates. For inquiries, please contact [info@arexbio.com](mailto:info@arexbio.com) or your local distributor.

\*Clone Number, Reactivity, Source/Host and Clonality can be found in the product name and Key Features section above.

**DATASHEET****CD143 Mouse Monoclonal Antibody(C3674)**

CAT. NO. AMA03286

**DATA**

Western blot analysis of CD143 expression in mouse kidney (A) whole cell lysates.  
(Predicted band size: 150 kD; Observed band size: 150 kD)

**STORAGE**

Store at 4°C short term. For long term storage, store at -20°C, avoiding freeze/thaw cycles.

**NOTE**

For Research Use Only. Not for diagnostic, therapeutics, prophylactic or in vivo use.