

## DATASHEET

# CD56 Mouse Monoclonal Antibody(C3680)

CAT. NO. AMA03292

### KEY FEATURES

|               |  |               |              |
|---------------|--|---------------|--------------|
| Target        | CD56   | Source / Host | Mouse        |
| Reactivity    | Mouse  | Clonality     | Monoclonal   |
| Applications  | WB   | Conjugation   | Unconjugated |
| Form / Buffer | Mouse IgG1 kappa. Liquid in PBS, pH 7.3, 30% glycerol, and 0.01% sodium azide. | Storage       | at-20°C      |

### BACKGROUND

This gene encodes a cell adhesion protein which is a member of the immunoglobulin superfamily. The encoded protein is involved in cell-to-cell interactions as well as cell-matrix interactions during development and differentiation. The encoded protein plays a role in the development of the nervous system by regulating neurogenesis, neurite outgrowth, and cell migration. This protein is also involved in the expansion of T lymphocytes, B lymphocytes and natural killer (NK) cells which play an important role in immune surveillance.

### APPLICATION

To ensure optimal assay performance, AREX recommends conducting reagent titration tailored to each testing system for optimal detection results.

|    |                |
|----|----------------|
| WB | 1:500 - 1:1000 |
|----|----------------|

\*Results are sample-specific. Please refer to your local assay conditions and test parameters for reference.

### PRODUCT OVERVIEW

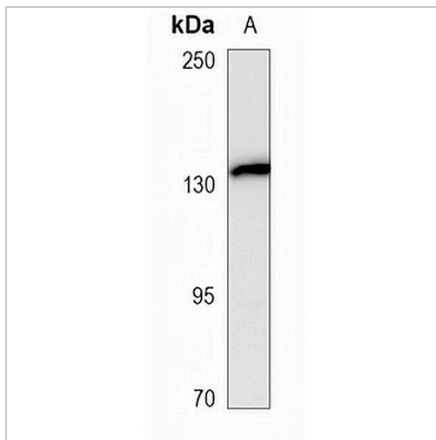
|                   |   |
|-------------------|---|
| Description       | Mouse monoclonal antibody to CD56   |
| Specificity       | Recognizes endogenous levels of CD56 protein.   |
| Antibody Type     | Primary antibody  |
| Immunogen         | KLH-conjugated synthetic peptide encompassing a sequence within the C-term region of human CD56. The exact sequence is proprietary. |
| Purification      | This antibody is purified through a protein G column.   |
| Molecular Weight  | Predicted: 119 kD; Observed: 132 kD   |
| Form/Buffer       | Mouse IgG1 kappa. Liquid in PBS, pH 7.3, 30% glycerol, and 0.01% sodium azide.  |
| Alternative Names | NCAM; Neural cell adhesion molecule 1; N-CAM-1; NCAM-1; CD56  |
| Gene Symbol       | NCAM1   |
| Entrez Gene       | 17967(Mouse)  |
| SwissProt         | P13595(Mouse)   |

\*AREX continuously optimizes our products. Webpage content may not reflect the latest updates. For inquiries, please contact [info@arexbio.com](mailto:info@arexbio.com) or your local distributor.

\*Clone Number, Reactivity, Source/Host and Clonality can be found in the product name and Key Features section above.

**DATASHEET****CD56 Mouse Monoclonal Antibody(C3680)**

CAT. NO. AMA03292

**DATA**

Western blot analysis of CD56 expression in mouse brain (A) whole cell lysates. (Predicted band size: 119 kD; Observed band size: 132 kD)

**STORAGE**

Store at 4°C short term. For long term storage, store at -20°C, avoiding freeze/thaw cycles.

**NOTE**

For Research Use Only. Not for diagnostic, therapeutics, prophylactic or in vivo use.