

DATASHEET

MTHFD2 Mouse Monoclonal Antibody(C3681)

CAT. NO. AMA03293

KEY FEATURES

Target	MTHFD2	Source / Host	Mouse
Reactivity	Human, Mouse	Clonality	Monoclonal
Applications	WB	Conjugation	Unconjugated
Form / Buffer	Mouse IgG1 kappa. Liquid in PBS, pH 7.3, 30% glycerol, and 0.01% sodium azide.	Storage	at-20°C

BACKGROUND

Although its dehydrogenase activity is NAD-specific, it can also utilize NADP at a reduced efficiency.

APPLICATION

To ensure optimal assay performance, AREX recommends conducting reagent titration tailored to each testing system for optimal detection results.

WB	1:1000 - 1:2000
----	-----------------

*Results are sample-specific. Please refer to your local assay conditions and test parameters for reference.

PRODUCT OVERVIEW

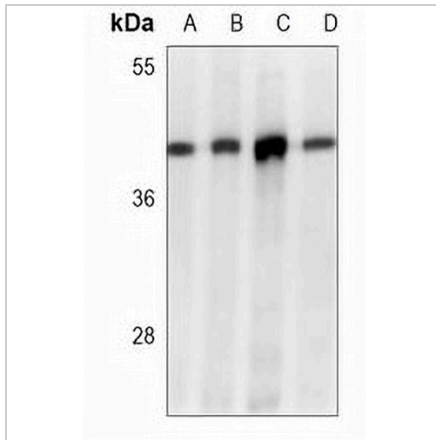
Description	Mouse monoclonal antibody to MTHFD2
Specificity	Recognizes endogenous levels of MTHFD2 protein.
Antibody Type	Primary antibody
Immunogen	KLH-conjugated synthetic peptide encompassing a sequence within the C-term region of human MTHFD2. The exact sequence is proprietary.
Purification	This antibody is purified through a protein G column.
Molecular Weight	Predicted: 37 kD; Observed: 38 kD
Form/Buffer	Mouse IgG1 kappa. Liquid in PBS, pH 7.3, 30% glycerol, and 0.01% sodium azide.
Alternative Names	NMDMC; Bifunctional methylenetetrahydrofolate dehydrogenase/cyclohydrolase, mitochondrial
Gene Symbol	MTHFD2
Entrez Gene	10797(Human); 17768(Mouse)
SwissProt	P13995(Human); P18155(Mouse)

*AREX continuously optimizes our products. Webpage content may not reflect the latest updates. For inquiries, please contact info@arexbio.com or your local distributor.

*Clone Number, Reactivity, Source/Host and Clonality can be found in the product name and Key Features section above.

DATASHEET**MTHFD2 Mouse Monoclonal Antibody(C3681)**

CAT. NO. AMA03293

DATA

Western blot analysis of MTHFD2 expression in HeLa (A), 293 (B), MOLT4 (C), mouse heart (D) whole cell lysates. (Predicted band size: 37 kD; Observed band size: 38 kD)

STORAGE

Store at 4°C short term. For long term storage, store at -20°C, avoiding freeze/thaw cycles.

NOTE

For Research Use Only. Not for diagnostic, therapeutics, prophylactic or in vivo use.