

DATASHEET

ETS1 Mouse Monoclonal Antibody(C3687)

CAT. NO. AMA03299

KEY FEATURES

Target	ETS1	Source / Host	Mouse
Reactivity	Human	Clonality	Monoclonal
Applications	WB, FC	Conjugation	Unconjugated
Form / Buffer	Mouse IgG2b kappa. Liquid in PBS, pH 7.3, 30% glycerol, and 0.01% sodium azide.	Storage	at-20°C

BACKGROUND

Transcription factor . Directly controls the expression of cytokine and chemokine genes in a wide variety of different cellular contexts . May control the differentiation, survival and proliferation of lymphoid cells . May also regulate angiogenesis through regulation of expression of genes controlling endothelial cell migration and invasion .

APPLICATION

To ensure optimal assay performance, AREX recommends conducting reagent titration tailored to each testing system for optimal detection results.

WB	1:500 - 1:1000
IF/ICC	1:10 - 1:50

*Results are sample-specific. Please refer to your local assay conditions and test parameters for reference.

PRODUCT OVERVIEW

Description	Mouse monoclonal antibody to ETS1
Specificity	Recognizes endogenous levels of ETS1 protein.
Antibody Type	Primary antibody
Immunogen	Recombinant fusion protein of human ETS1. The exact sequence is proprietary.
Purification	This antibody is purified through a protein G column.
Molecular Weight	Predicted: 50 kD; Observed: 55 kD
Form/Buffer	Mouse IgG2b kappa. Liquid in PBS, pH 7.3, 30% glycerol, and 0.01% sodium azide.
Alternative Names	EWSR2; Protein C-ets-1; p54
Gene Symbol	ETS1
Entrez Gene	2113(Human)
SwissProt	P14921(Human)

*AREX continuously optimizes our products. Webpage content may not reflect the latest updates. For inquiries, please contact info@arexbio.com or your local distributor.

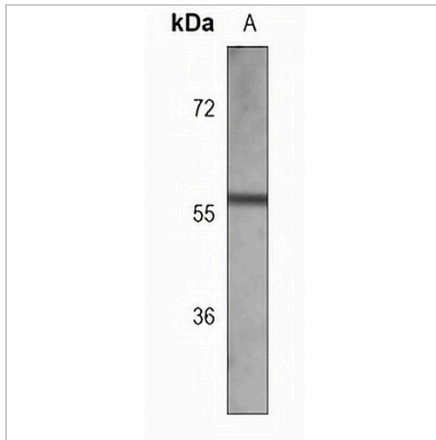
*Clone Number, Reactivity, Source/Host and Clonality can be found in the product name and Key Features section above.

DATASHEET

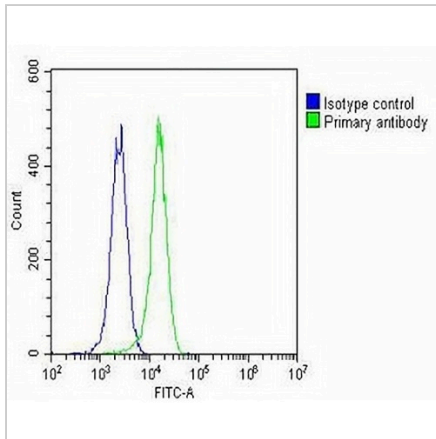
ETS1 Mouse Monoclonal Antibody(C3687)

CAT. NO. AMA03299

DATA



Western blot analysis of ETS1 expression in MOLT4 (A) whole cell lysates. (Predicted band size: 50 kD; Observed band size: 55 kD)



Flow cytometric analysis of K562 cells using Anti-ETS1 Antibody. The cells were fixed with 2% paraformaldehyde (10 min) and then permeabilized with 90% methanol for 10 min. The cells were incubated in 2% bovine serum albumin to block non-specific protein-protein interactions followed by the antibody at 37 °C for 60 min. The secondary antibody Goat Anti-Mouse IgG (H&L) - AREX® Fluor 488 was incubated at 37 °C for 40 min. Isotype control antibody (blue line) was used under the same condition.

STORAGE

Store at 4°C short term. For long term storage, store at -20°C, avoiding freeze/thaw cycles.

NOTE

For Research Use Only. Not for diagnostic, therapeutics, prophylactic or in vivo use.