

**DATASHEET**

**Gamma-catenin Mouse Monoclonal Antibody(C3688)**

CAT. NO. AMA03300

**KEY FEATURES**

Target	Gamma-catenin	Source / Host	Mouse
Reactivity	Human	Clonality	Monoclonal
Applications	WB	Conjugation	Unconjugated
Form / Buffer	Mouse IgG3. Supplied in crude ascites with 0.01% sodium azide.	Storage	at-20°C

**BACKGROUND**

Common junctional plaque protein. The membrane-associated plaques are architectural elements in an important strategic position to influence the arrangement and function of both the cytoskeleton and the cells within the tissue. The presence of plakoglobin in both the desmosomes and in the intermediate junctions suggests that it plays a central role in the structure and function of submembranous plaques. Acts as a substrate for VE-PTP and is required by it to stimulate VE-cadherin function in endothelial cells. Can replace beta-catenin in E-cadherin/catenin adhesion complexes which are proposed to couple cadherins to the actin cytoskeleton . May promote axon outgrowth and motor fiber repair via DSP-mediated recruitment to outgrowth tips .

**APPLICATION**

To ensure optimal assay performance, AREX recommends conducting reagent titration tailored to each testing system for optimal detection results.

WB	1:500 - 1:1000
----	----------------

\*Results are sample-specific. Please refer to your local assay conditions and test parameters for reference.

**PRODUCT OVERVIEW**

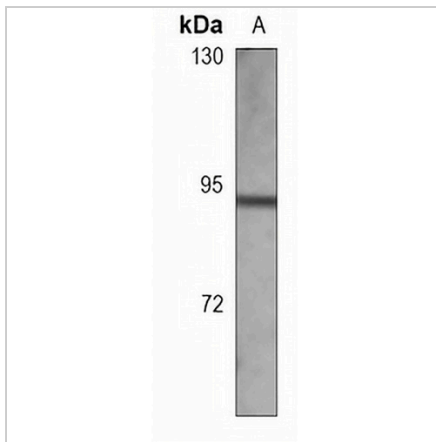
Description	Mouse monoclonal antibody to Gamma-catenin
Specificity	Recognizes endogenous levels of Gamma-catenin protein.
Antibody Type	Primary antibody
Immunogen	KLH-conjugated synthetic peptide encompassing a sequence within the center region of human Gamma-catenin. The exact sequence is proprietary.
Molecular Weight	Predicted: 81 kD; Observed: 93 kD
Form/Buffer	Mouse IgG3. Supplied in crude ascites with 0.01% sodium azide.
Alternative Names	CTNNG; DP3; Junction plakoglobin; Catenin gamma; Desmoplakin III; Desmoplakin-3
Gene Symbol	JUP
Entrez Gene	3728(Human)
SwissProt	P14923(Human)

\*AREX continuously optimizes our products. Webpage content may not reflect the latest updates. For inquiries, please contact [info@arexbio.com](mailto:info@arexbio.com) or your local distributor.

\*Clone Number, Reactivity, Source/Host and Clonality can be found in the product name and Key Features section above.

**DATASHEET****Gamma-catenin Mouse Monoclonal Antibody(C3688)**

CAT. NO. AMA03300

**DATA**

Western blot analysis of Gamma-catenin expression in NCIH292 (A) whole cell lysates.  
(Predicted band size: 81 kD; Observed band size: 93 kD)

**STORAGE**

Store at 4°C short term. For long term storage, store at -20°C, avoiding freeze/thaw cycles.

**NOTE**

For Research Use Only. Not for diagnostic, therapeutics, prophylactic or in vivo use.