

DATASHEET

nm23-H1 Mouse Monoclonal Antibody(C3695)

CAT. NO. AMA03307

KEY FEATURES

Target	nm23-H1	Source / Host	Mouse
Reactivity	Human	Clonality	Monoclonal
Applications	WB, IHC	Conjugation	Unconjugated
Form / Buffer	Mouse IgG2a. Liquid in PBS, pH 7.3, 30% glycerol, and 0.01% sodium azide.	Storage	at-20°C

BACKGROUND

Catalyzes the transfer of a gamma-phosphoryl group from a nucleoside triphosphate, mainly ATP, to a nucleoside diphosphate via a ping-pong mechanism involving a phosphohistidine intermediate, therefore contributing to the nucleoside triphosphate homeostasis . Also phosphorylates geranyl pyrophosphate (GPP) and farnesyl pyrophosphate (FPP), linking it to isoprenoid metabolism . Additionally, functions as a non-specific serine/threonine kinase and histidine protein kinase, transferring phosphoryl groups from its active site to target proteins . May function as a Mg(2+)-dependent single-stranded DNA endonuclease as part of the SET complex, cooperating with the 3'-5' exonuclease TREX1 to mediate apoptotic DNA fragmentation in cytotoxic T lymphocytes .

APPLICATION

To ensure optimal assay performance, AREX recommends conducting reagent titration tailored to each testing system for optimal detection results.

WB	1:500 - 1:1000
IHC	1:50 - 1:200

*Results are sample-specific. Please refer to your local assay conditions and test parameters for reference.

PRODUCT OVERVIEW

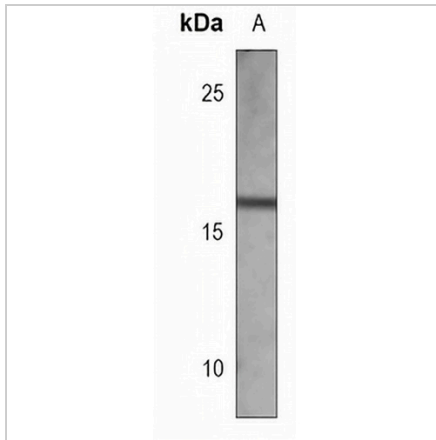
Description	Mouse monoclonal antibody to nm23-H1
Specificity	Recognizes endogenous levels of nm23-H1 protein.
Antibody Type	Primary antibody
Immunogen	Recombinant fusion protein of human nm23-H1. The exact sequence is proprietary.
Purification	This antibody is purified through a protein G column.
Molecular Weight	Predicted: 17 kD; Observed: 20 kD
Form/Buffer	Mouse IgG2a. Liquid in PBS, pH 7.3, 30% glycerol, and 0.01% sodium azide.
Alternative Names	NDPKA; NM23; Nucleoside diphosphate kinase A; NDK A; NDP kinase A; Granzyme A-activated DNase; GAAD; Metastasis inhibition factor nm23; NM23-H1; Tumor metastatic process-associated protein
Gene Symbol	NME1
Entrez Gene	4830(Human)
SwissProt	P15531(Human)

*AREX continuously optimizes our products. Webpage content may not reflect the latest updates. For inquiries, please contact info@arexbio.com or your local distributor.

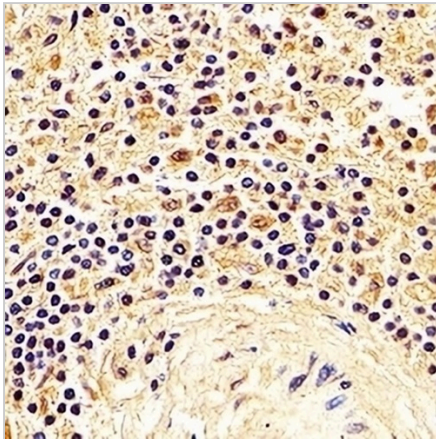
*Clone Number, Reactivity, Source/Host and Clonality can be found in the product name and Key Features section above.

DATASHEET**nm23-H1 Mouse Monoclonal Antibody(C3695)**

CAT. NO. AMA03307

DATA

Western blot analysis of nm23-H1 expression in MCF7 (A) whole cell lysates. (Predicted band size: 17 kD; Observed band size: 20 kD)



Immunohistochemical analysis of nm23-H1 staining in human spleen formalin fixed paraffin embedded tissue section. The section was pre-treated using heat mediated antigen retrieval with sodium citrate buffer (pH 6.0). The section was then incubated with the antibody at room temperature and detected using an HRP conjugated compact polymer system. DAB was used as the chromogen. The section was then counterstained with haematoxylin and mounted with DPX.

STORAGE

Store at 4°C short term. For long term storage, store at -20°C, avoiding freeze/thaw cycles.

NOTE

For Research Use Only. Not for diagnostic, therapeutics, prophylactic or in vivo use.