

DATASHEET

CREB Mouse Monoclonal Antibody(C3701)

CAT. NO. AMA03313

KEY FEATURES

Target	CREB	Source / Host	Mouse
Reactivity	Human, Mouse, Rat	Clonality	Monoclonal
Applications	WB	Conjugation	Unconjugated
Form / Buffer	Mouse IgG1 kappa. Liquid in PBS, pH 7.3, 30% glycerol, and 0.01% sodium azide.	Storage	at-20°C

BACKGROUND

Phosphorylation-dependent transcription factor that stimulates transcription upon binding to the DNA cAMP response element (CRE), a sequence present in many viral and cellular promoters . Transcription activation is enhanced by the TORC coactivators which act independently of Ser-119 phosphorylation , a sequence present in many viral and cellular promoters . Transcription activation is enhanced by the TORC coactivators which act independently of Ser-119 phosphorylation . Involved in different cellular processes including the synchronization of circadian rhythmicity and the differentiation of adipose cells . Regulates the expression of apoptotic and inflammatory response factors in cardiomyocytes in response to ERFE-mediated activation of AKT signaling .

APPLICATION

To ensure optimal assay performance, AREX recommends conducting reagent titration tailored to each testing system for optimal detection results.

WB	1:500 - 1:1000
IHC	1:50 - 1:200

*Results are sample-specific. Please refer to your local assay conditions and test parameters for reference.

PRODUCT OVERVIEW

Description	Mouse monoclonal antibody to CREB
Specificity	Recognizes endogenous levels of CREB protein.
Antibody Type	Primary antibody
Immunogen	Recombinant fusion protein of human CREB. The exact sequence is proprietary.
Purification	This antibody is purified through a protein G column.
Molecular Weight	Predicted: 35 kD; Observed: 43 kD
Form/Buffer	Mouse IgG1 kappa. Liquid in PBS, pH 7.3, 30% glycerol, and 0.01% sodium azide.
Alternative Names	Cyclic AMP-responsive element-binding protein 1; CREB-1; cAMP-responsive element-binding protein 1
Gene Symbol	CREB1
Entrez Gene	1385(Human); 12912(Mouse); 81646(Rat)
SwissProt	P16220(Human); Q01147(Mouse); P15337(Rat)

*AREX continuously optimizes our products. Webpage content may not reflect the latest updates. For inquiries, please contact info@arexbio.com or your local distributor.

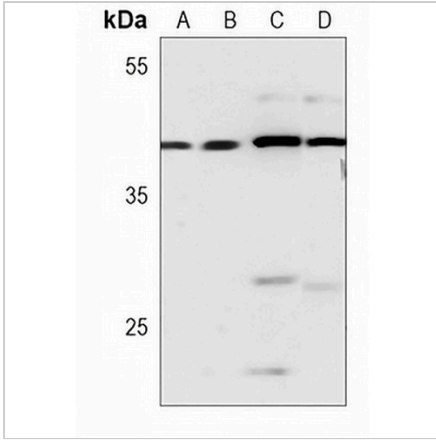
*Clone Number, Reactivity, Source/Host and Clonality can be found in the product name and Key Features section above.

DATASHEET

CREB Mouse Monoclonal Antibody(C3701)

CAT. NO. AMA03313

DATA



Western blot analysis of CREB expression in A549 (A), Neuro2a (B), NIH3T3 (C), C6 (D) whole cell lysates. (Predicted band size: 35 kD; Observed band size: 43 kD)



Immunohistochemical analysis of CREB staining in human prostate cancer formalin fixed paraffin embedded tissue section. The section was pre-treated using heat mediated antigen retrieval with sodium citrate buffer (pH 6.0). The section was then incubated with the antibody at room temperature and detected using an HRP conjugated compact polymer system. DAB was used as the chromogen. The section was then counterstained with haematoxylin and mounted with DPX.

STORAGE

Store at 4°C short term. For long term storage, store at -20°C, avoiding freeze/thaw cycles.

NOTE

For Research Use Only. Not for diagnostic, therapeutics, prophylactic or in vivo use.