

**DATASHEET**

**HLA-G Mouse Monoclonal Antibody(C3709)**

CAT. NO. AMA03321

**KEY FEATURES**

Target	HLA-G	Source / Host	Mouse
Reactivity	Human	Clonality	Monoclonal
Applications	WB	Conjugation	Unconjugated
Form / Buffer	Mouse IgG1. Liquid in PBS, pH 7.3, 30% glycerol, and 0.01% sodium azide.	Storage	at-20°C

**BACKGROUND**

Non-classical major histocompatibility class Ib molecule involved in immune regulatory processes at the maternal-fetal interface . In complex with B2M/beta-2 microglobulin binds a limited repertoire of nonamer self-peptides derived from intracellular proteins including histones and ribosomal proteins . Peptide-bound HLA-G-B2M complex acts as a ligand for inhibitory/activating KIR2DL4, LILRB1 and LILRB2 receptors on uterine immune cells to promote fetal development while maintaining maternal-fetal tolerance . Upon interaction with KIR2DL4 and LILRB1 receptors on decidual NK cells, it triggers NK cell senescence-associated secretory phenotype as a molecular switch to promote vascular remodeling and fetal growth in early pregnancy .

**APPLICATION**

To ensure optimal assay performance, AREX recommends conducting reagent titration tailored to each testing system for optimal detection results.

WB	1:500 - 1:1000
----	----------------

\*Results are sample-specific. Please refer to your local assay conditions and test parameters for reference.

**PRODUCT OVERVIEW**

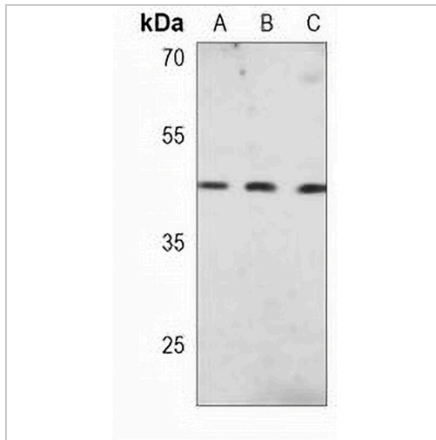
Description	Mouse monoclonal antibody to HLA-G
Specificity	Recognizes endogenous levels of HLA-G protein.
Antibody Type	Primary antibody
Immunogen	Recombinant fusion protein of human HLA-G. The exact sequence is proprietary.
Purification	This antibody is purified through a protein G column.
Molecular Weight	Predicted: 38 kD; Observed: 43 kD
Form/Buffer	Mouse IgG1. Liquid in PBS, pH 7.3, 30% glycerol, and 0.01% sodium azide.
Alternative Names	HLA-6.0; HLAG; HLA class I histocompatibility antigen, alpha chain G; HLA G antigen; MHC class I antigen G
Gene Symbol	HLA-G
Entrez Gene	3135(Human)
SwissProt	P17693(Human)

\*AREX continuously optimizes our products. Webpage content may not reflect the latest updates. For inquiries, please contact [info@arexbio.com](mailto:info@arexbio.com) or your local distributor.

\*Clone Number, Reactivity, Source/Host and Clonality can be found in the product name and Key Features section above.

**DATASHEET****HLA-G Mouse Monoclonal Antibody(C3709)**

CAT. NO. AMA03321

**DATA**

Western blot analysis of HLA-G expression in A549 (A), Ramos (B), MDAMB231 (C) whole cell lysates. (Predicted band size: 38 kD; Observed band size: 43 kD)

**STORAGE**

Store at 4°C short term. For long term storage, store at -20°C, avoiding freeze/thaw cycles.

**NOTE**

For Research Use Only. Not for diagnostic, therapeutics, prophylactic or in vivo use.