

DATASHEET

Acetylcholinesterase Mouse Monoclonal Antibody(C3730)

CAT. NO. AMA03342

KEY FEATURES

Target	Acetylcholinesterase	Source / Host	Mouse
Reactivity	Human, Mouse, Rat, Monkey	Clonality	Monoclonal
Applications	WB	Conjugation	Unconjugated
Form / Buffer	Mouse IgG1. Liquid in PBS, pH 7.3, 30% glycerol, and 0.01% sodium azide.	Storage	at-20°C

BACKGROUND

Hydrolyzes rapidly the acetylcholine neurotransmitter released into the synaptic cleft allowing to terminate the signal transduction at the neuromuscular junction. Role in neuronal apoptosis.

APPLICATION

To ensure optimal assay performance, AREX recommends conducting reagent titration tailored to each testing system for optimal detection results.

WB	1:500 - 1:1000
----	----------------

*Results are sample-specific. Please refer to your local assay conditions and test parameters for reference.

PRODUCT OVERVIEW

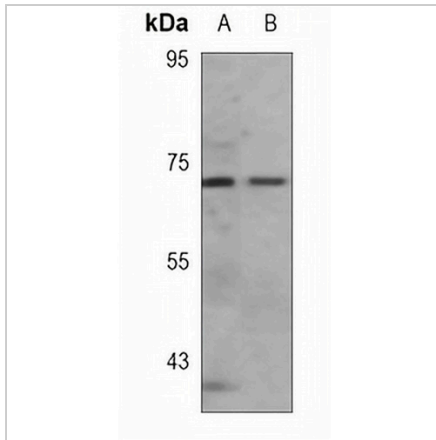
Description	Mouse monoclonal antibody to Acetylcholinesterase
Specificity	Recognizes endogenous levels of Acetylcholinesterase protein.
Antibody Type	Primary antibody
Immunogen	KLH-conjugated synthetic peptide encompassing a sequence within the C-term region of human Acetylcholinesterase. The exact sequence is proprietary.
Purification	This antibody is purified through a protein G column.
Molecular Weight	Predicted: 67 kD; Observed: 68 kD
Form/Buffer	Mouse IgG1. Liquid in PBS, pH 7.3, 30% glycerol, and 0.01% sodium azide.
Alternative Names	Acetylcholinesterase; AChE
Gene Symbol	ACHE
Entrez Gene	43(Human); 11423(Mouse); 83817(Rat)
SwissProt	P22303(Human); P21836(Mouse); P37136(Rat)

*AREX continuously optimizes our products. Webpage content may not reflect the latest updates. For inquiries, please contact info@arexbio.com or your local distributor.

*Clone Number, Reactivity, Source/Host and Clonality can be found in the product name and Key Features section above.

DATASHEET**Acetylcholinesterase Mouse Monoclonal Antibody(C3730)**

CAT. NO. AMA03342

DATA

Western blot analysis of Acetylcholinesterase expression in Jurkat (A), mouse brain (B) whole cell lysates. (Predicted band size: 67 kD; Observed band size: 68 kD)

STORAGE

Store at 4°C short term. For long term storage, store at -20°C, avoiding freeze/thaw cycles.

NOTE

For Research Use Only. Not for diagnostic, therapeutics, prophylactic or in vivo use.