

DATASHEET

IMPA1 Mouse Monoclonal Antibody(C3756)

CAT. NO. AMA03368

KEY FEATURES

Target	IMPA1	Source / Host	Mouse
Reactivity	Human	Clonality	Monoclonal
Applications	WB	Conjugation	Unconjugated
Form / Buffer	Mouse IgG1 kappa. Liquid in PBS, pH 7.3, 30% glycerol, and 0.01% sodium azide.	Storage	at-20°C

BACKGROUND

Phosphatase involved in the dephosphorylation of myo-inositol monophosphates to generate myo-inositol . Is also able to dephosphorylate scyllo-inositol-phosphate, myo-inositol 1,4-diphosphate, scyllo-inositol-1,3-diphosphate and scyllo-inositol-1,4-diphosphate . Also dephosphorylates in vitro other sugar-phosphates including D-galactose-1-phosphate, glucose-1-phosphate, glucose-6-phosphate, fructose-1-phosphate, beta-glycerophosphate and 2'-AMP . Responsible for the provision of inositol required for synthesis of phosphatidylinositols and polyphosphoinositides, and involved in maintaining normal brain function . Has been implicated as the pharmacological target for lithium (Li(+)) action in brain, which is used to treat bipolar affective disorder .

APPLICATION

To ensure optimal assay performance, AREX recommends conducting reagent titration tailored to each testing system for optimal detection results.

WB	1:500 - 1:1000
----	----------------

*Results are sample-specific. Please refer to your local assay conditions and test parameters for reference.

PRODUCT OVERVIEW

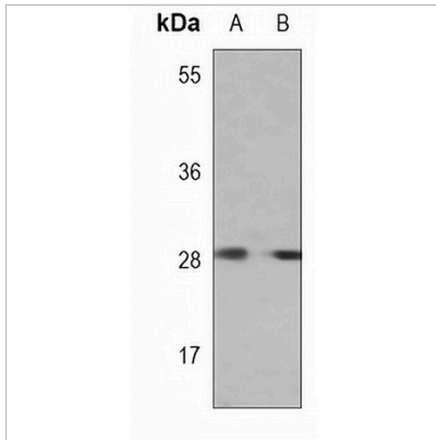
Description	Mouse monoclonal antibody to IMPA1
Specificity	Recognizes endogenous levels of IMPA1 protein.
Antibody Type	Primary antibody
Immunogen	Recombinant fusion protein of human IMPA1. The exact sequence is proprietary.
Purification	This antibody is purified through a protein G column.
Molecular Weight	Predicted: 30 kD; Observed: 30 kD
Form/Buffer	Mouse IgG1 kappa. Liquid in PBS, pH 7.3, 30% glycerol, and 0.01% sodium azide.
Alternative Names	IMPA; Inositol monophosphatase 1; IMP 1; IMPase 1; Inositol-1(or 4)-monophosphatase 1; Lithium-sensitive myo-inositol monophosphatase A1
Gene Symbol	IMPA1
Entrez Gene	3612(Human)
SwissProt	P29218(Human)

*AREX continuously optimizes our products. Webpage content may not reflect the latest updates. For inquiries, please contact info@arexbio.com or your local distributor.

*Clone Number, Reactivity, Source/Host and Clonality can be found in the product name and Key Features section above.

DATASHEET**IMPA1 Mouse Monoclonal Antibody(C3756)**

CAT. NO. AMA03368

DATA**STORAGE**

Store at 4°C short term. For long term storage, store at -20°C, avoiding freeze/thaw cycles.

NOTE

For Research Use Only. Not for diagnostic, therapeutics, prophylactic or in vivo use.