

DATASHEET

SCCA1 Mouse Monoclonal Antibody(C3759)

CAT. NO. AMA03371

KEY FEATURES

Target	SCCA1	Source / Host	Mouse
Reactivity	Human	Clonality	Monoclonal
Applications	WB	Conjugation	Unconjugated
Form / Buffer	Mouse IgG2b kappa. Liquid in PBS, pH 7.3, 30% glycerol, and 0.01% sodium azide.	Storage	at-20°C

BACKGROUND

May act as a papain-like cysteine protease inhibitor to modulate the host immune response against tumor cells. Also functions as an inhibitor of UV-induced apoptosis via suppression of the activity of c-Jun NH(2)-terminal kinase (JNK1).

APPLICATION

To ensure optimal assay performance, AREX recommends conducting reagent titration tailored to each testing system for optimal detection results.

WB	1:1000 - 1:2000
----	-----------------

*Results are sample-specific. Please refer to your local assay conditions and test parameters for reference.

PRODUCT OVERVIEW

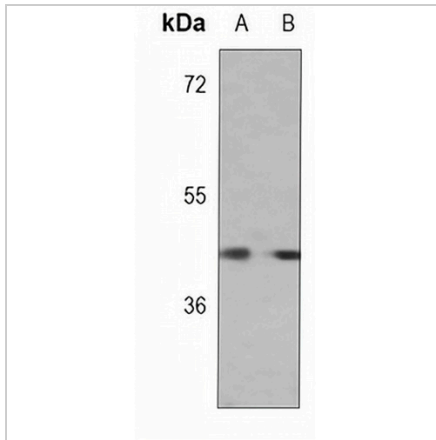
Description	Mouse monoclonal antibody to SCCA1
Specificity	Recognizes endogenous levels of SCCA1 protein.
Antibody Type	Primary antibody
Immunogen	Recombinant fusion protein of human SCCA1. The exact sequence is proprietary.
Purification	This antibody is purified through a protein G column.
Molecular Weight	Predicted: 44 kD; Observed: 44 kD
Form/Buffer	Mouse IgG2b kappa. Liquid in PBS, pH 7.3, 30% glycerol, and 0.01% sodium azide.
Alternative Names	SCCA; SCCA1; Serpin B3; Protein T4-A; Squamous cell carcinoma antigen 1; SCCA-1
Gene Symbol	SERPINB3
Entrez Gene	6317(Human)
SwissProt	P29508(Human)

*AREX continuously optimizes our products. Webpage content may not reflect the latest updates. For inquiries, please contact info@arexbio.com or your local distributor.

*Clone Number, Reactivity, Source/Host and Clonality can be found in the product name and Key Features section above.

DATASHEET**SCCA1 Mouse Monoclonal Antibody(C3759)**

CAT. NO. AMA03371

DATA

Western blot analysis of SCCA1 expression in A431 (A), NCIH292 (B) whole cell lysates. (Predicted band size: 44 kD; Observed band size: 44 kD)

STORAGE

Store at 4°C short term. For long term storage, store at -20°C, avoiding freeze/thaw cycles.

NOTE

For Research Use Only. Not for diagnostic, therapeutics, prophylactic or in vivo use.