

DATASHEET

CDC25C Mouse Monoclonal Antibody(C3761)

CAT. NO. AMA03373

KEY FEATURES

Target	CDC25C	Source / Host	Mouse
Reactivity	Human	Clonality	Monoclonal
Applications	WB, IHC	Conjugation	Unconjugated
Form / Buffer	Mouse IgG2a kappa. Liquid in PBS, pH 7.3, 30% glycerol, and 0.01% sodium azide.	Storage	at-20°C

BACKGROUND

Functions as a dosage-dependent inducer in mitotic control. Tyrosine protein phosphatase required for progression of the cell cycle . When phosphorylated, highly effective in activating G2 cells into prophase . Directly dephosphorylates CDK1 and activates its kinase activity .

APPLICATION

To ensure optimal assay performance, AREX recommends conducting reagent titration tailored to each testing system for optimal detection results.

WB	1:500 - 1:1000
IHC	1:50 - 1:200

*Results are sample-specific. Please refer to your local assay conditions and test parameters for reference.

PRODUCT OVERVIEW

Description	Mouse monoclonal antibody to CDC25C
Specificity	Recognizes endogenous levels of CDC25C protein.
Antibody Type	Primary antibody
Immunogen	Recombinant fusion protein of human CDC25C. The exact sequence is proprietary.
Purification	This antibody is purified through a protein G column.
Molecular Weight	Predicted: 53 kD; Observed: 60 kD
Form/Buffer	Mouse IgG2a kappa. Liquid in PBS, pH 7.3, 30% glycerol, and 0.01% sodium azide.
Alternative Names	M-phase inducer phosphatase 3; Dual specificity phosphatase Cdc25C
Gene Symbol	CDC25C
Entrez Gene	995(Human)
SwissProt	P30307(Human)

*AREX continuously optimizes our products. Webpage content may not reflect the latest updates. For inquiries, please contact info@arexbio.com or your local distributor.

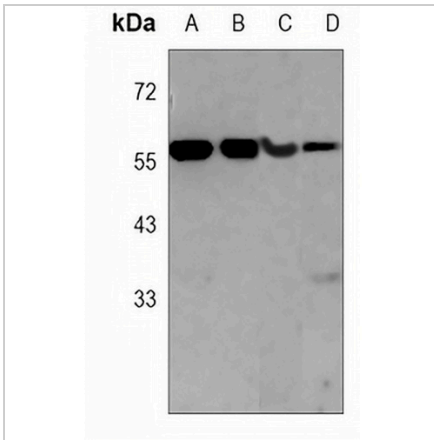
*Clone Number, Reactivity, Source/Host and Clonality can be found in the product name and Key Features section above.

DATASHEET

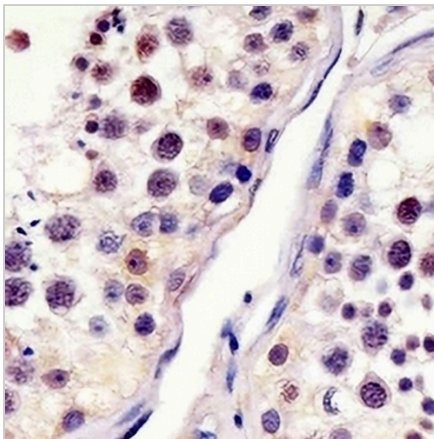
CDC25C Mouse Monoclonal Antibody(C3761)

CAT. NO. AMA03373

DATA



Western blot analysis of CDC25C expression in HepG2 (A), K562 (B), MCF7 (C), Raji (D) whole cell lysates. (Predicted band size: 53 kD; Observed band size: 60 kD)



Immunohistochemical analysis of CDC25C staining in human testis formalin fixed paraffin embedded tissue section. The section was pre-treated using heat mediated antigen retrieval with sodium citrate buffer (pH 6.0). The section was then incubated with the antibody at room temperature and detected using an HRP conjugated compact polymer system. DAB was used as the chromogen. The section was then counterstained with haematoxylin and mounted with DPX.

STORAGE

Store at 4°C short term. For long term storage, store at -20°C, avoiding freeze/thaw cycles.

NOTE

For Research Use Only. Not for diagnostic, therapeutics, prophylactic or in vivo use.