

DATASHEET

AREB6 Mouse Monoclonal Antibody(C3776)

CAT. NO. AMA03388

KEY FEATURES

Target	AREB6	Source / Host	Mouse
Reactivity	Human	Clonality	Monoclonal
Applications	WB, FC	Conjugation	Unconjugated
Form / Buffer	Mouse IgG1 kappa. Supplied in crude ascites with 0.01% sodium azide.	Storage	at-20°C

BACKGROUND

Acts as a transcriptional repressor. Inhibits interleukin-2 (IL-2) gene expression. Enhances or represses the promoter activity of the ATP1A1 gene depending on the quantity of cDNA and on the cell type. Represses E-cadherin promoter and induces an epithelial-mesenchymal transition (EMT) by recruiting SMARCA4/BRG1. Represses BCL6 transcription in the presence of the corepressor CTBP1. Positively regulates neuronal differentiation. Represses RCOR1 transcription activation during neurogenesis. Represses transcription by binding to the E box (5'-CANNTG-3'). In the absence of TGFβ1, acts as a repressor of COL1A2 transcription via binding to the E-box in the upstream enhancer region .

APPLICATION

To ensure optimal assay performance, AREX recommends conducting reagent titration tailored to each testing system for optimal detection results.

WB	1:500 - 1:5000
FC	1:10 - 1:50

*Results are sample-specific. Please refer to your local assay conditions and test parameters for reference.

PRODUCT OVERVIEW

Description	Mouse monoclonal antibody to AREB6
Specificity	Recognizes endogenous levels of AREB6 protein.
Antibody Type	Primary antibody
Immunogen	KLH-conjugated synthetic peptide encompassing a sequence within the N-term region of human AREB6. The exact sequence is proprietary.
Molecular Weight	Predicted: 124 kD; Observed: 95 kD
Form/Buffer	Mouse IgG1 kappa. Supplied in crude ascites with 0.01% sodium azide.
Alternative Names	AREB6; TCF8; Zinc finger E-box-binding homeobox 1; NIL-2-A zinc finger protein; Negative regulator of IL2; Transcription factor 8; TCF-8
Gene Symbol	ZEB1
Entrez Gene	6935(Human)
SwissProt	P37275(Human)

*AREX continuously optimizes our products. Webpage content may not reflect the latest updates. For inquiries, please contact info@arexbio.com or your local distributor.

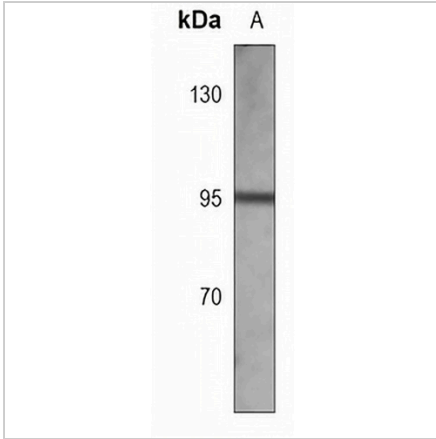
*Clone Number, Reactivity, Source/Host and Clonality can be found in the product name and Key Features section above.

DATASHEET

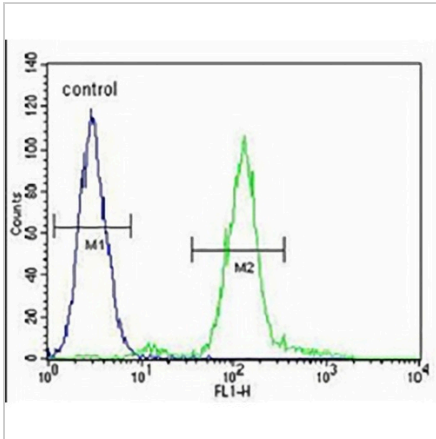
AREB6 Mouse Monoclonal Antibody(C3776)

CAT. NO. AMA03388

DATA



Western blot analysis of AREB6 expression in A549 (A) whole cell lysates. (Predicted band size: 124 kD; Observed band size: 95 kD)



Flow cytometric analysis of A549 cells using Anti-AREB6 Antibody. The cells were fixed with 2% paraformaldehyde (10 min) and then permeabilized with 90% methanol for 10 min. The cells were incubated in 2% bovine serum albumin to block non-specific protein-protein interactions followed by the antibody at 37 °C for 60 min. The secondary antibody Goat Anti-Mouse IgG (H&L) - AREX® Fluor 488 was incubated at 37 °C for 40 min. Isotype control antibody (blue line) was used under the same condition.

STORAGE

Store at 4°C short term. For long term storage, store at -20°C, avoiding freeze/thaw cycles.

NOTE

For Research Use Only. Not for diagnostic, therapeutics, prophylactic or in vivo use.