

DATASHEET

MLH1 Mouse Monoclonal Antibody(C3779)

CAT. NO. AMA03391

KEY FEATURES

Target	MLH1	Source / Host	Mouse
Reactivity	Human	Clonality	Monoclonal
Applications	WB	Conjugation	Unconjugated
Form / Buffer	Mouse IgG1. Supplied in crude ascites with 0.01% sodium azide.	Storage	at-20°C

BACKGROUND

Heterodimerizes with PMS2 to form MutL alpha, a component of the post-replicative DNA mismatch repair system (MMR). DNA repair is initiated by MutS alpha (MSH2-MSH6) or MutS beta (MSH2-MSH3) binding to a dsDNA mismatch, then MutL alpha is recruited to the heteroduplex. Assembly of the MutL-MutS-heteroduplex ternary complex in presence of RFC and PCNA is sufficient to activate endonuclease activity of PMS2. It introduces single-strand breaks near the mismatch and thus generates new entry points for the exonuclease EXO1 to degrade the strand containing the mismatch. DNA methylation would prevent cleavage and therefore assure that only the newly mutated DNA strand is going to be corrected.

APPLICATION

To ensure optimal assay performance, AREX recommends conducting reagent titration tailored to each testing system for optimal detection results.

WB	1:500 - 1:1000
----	----------------

*Results are sample-specific. Please refer to your local assay conditions and test parameters for reference.

PRODUCT OVERVIEW

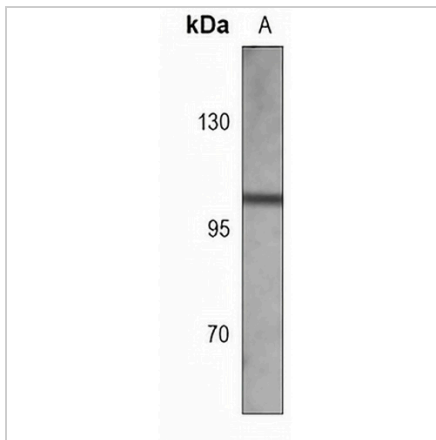
Description	Mouse monoclonal antibody to MLH1
Specificity	Recognizes endogenous levels of MLH1 protein.
Antibody Type	Primary antibody
Immunogen	KLH-conjugated synthetic peptide encompassing a sequence within the center region of human MLH1. The exact sequence is proprietary.
Molecular Weight	Predicted: 84 kD; Observed: 98 kD
Form/Buffer	Mouse IgG1. Supplied in crude ascites with 0.01% sodium azide.
Alternative Names	COCA2; DNA mismatch repair protein Mlh1; MutL protein homolog 1
Gene Symbol	MLH1
Entrez Gene	4292(Human)
SwissProt	P40692(Human)

*AREX continuously optimizes our products. Webpage content may not reflect the latest updates. For inquiries, please contact info@arexbio.com or your local distributor.

*Clone Number, Reactivity, Source/Host and Clonality can be found in the product name and Key Features section above.

DATASHEET**MLH1 Mouse Monoclonal Antibody(C3779)**

CAT. NO. AMA03391

DATA

Western blot analysis of MLH1 expression in A549 (A) whole cell lysates. (Predicted band size: 84 kD; Observed band size: 98 kD)

STORAGE

Store at 4°C short term. For long term storage, store at -20°C, avoiding freeze/thaw cycles.

NOTE

For Research Use Only. Not for diagnostic, therapeutics, prophylactic or in vivo use.