

DATASHEET

GNPDA1 Mouse Monoclonal Antibody(C3790)

CAT. NO. AMA03402

KEY FEATURES

Target	GNPDA1	Source / Host	Mouse
Reactivity	Mouse	Clonality	Monoclonal
Applications	WB	Conjugation	Unconjugated
Form / Buffer	Mouse IgG1 kappa. Supplied in crude ascites with 0.01% sodium azide.	Storage	at-20°C

BACKGROUND

Glucosamine-6-phosphate deaminase (EC 3.5.99.6) is an allosteric enzyme that catalyzes the reversible conversion of D-glucosamine-6-phosphate into D-fructose-6-phosphate and ammonium (Arreola et al., 2003 [PubMed 12965206]).

APPLICATION

To ensure optimal assay performance, AREX recommends conducting reagent titration tailored to each testing system for optimal detection results.

WB	1:500 - 1:4000
----	----------------

*Results are sample-specific. Please refer to your local assay conditions and test parameters for reference.

PRODUCT OVERVIEW

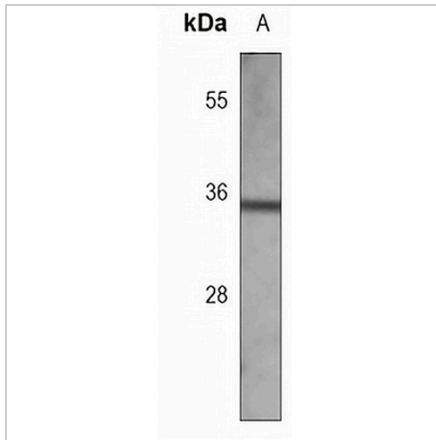
Description	Mouse monoclonal antibody to GNPDA1
Specificity	Recognizes endogenous levels of GNPDA1 protein.
Antibody Type	Primary antibody
Immunogen	Recombinant fusion protein of human GNPDA1. The exact sequence is proprietary.
Molecular Weight	Predicted: 32 kD; Observed: 35 kD
Form/Buffer	Mouse IgG1 kappa. Supplied in crude ascites with 0.01% sodium azide.
Alternative Names	GNPI; HLN; KIAA0060; Glucosamine-6-phosphate isomerase 1; Glucosamine-6-phosphate deaminase 1; GNPDA 1; GlcN6P deaminase 1; Oscillin
Gene Symbol	GNPDA1
Entrez Gene	26384(Mouse)
SwissProt	O88958(Mouse)

*AREX continuously optimizes our products. Webpage content may not reflect the latest updates. For inquiries, please contact info@arexbio.com or your local distributor.

*Clone Number, Reactivity, Source/Host and Clonality can be found in the product name and Key Features section above.

DATASHEET**GNPDA1 Mouse Monoclonal Antibody(C3790)**

CAT. NO. AMA03402

DATA

Western blot analysis of GNPDA1 expression in mouse kidney (A) whole cell lysates.
(Predicted band size: 32 kD; Observed band size: 35 kD)

STORAGE

Store at 4°C short term. For long term storage, store at -20°C, avoiding freeze/thaw cycles.

NOTE

For Research Use Only. Not for diagnostic, therapeutics, prophylactic or in vivo use.