

## DATASHEET

# CTCF Mouse Monoclonal Antibody(C3796)

CAT. NO. AMA03408

### KEY FEATURES

Target	CTCF	Source / Host	Mouse
Reactivity	Human, Rat	Clonality	Monoclonal
Applications	WB	Conjugation	Unconjugated
Form / Buffer	Mouse IgG1 kappa. Liquid in PBS, pH 7.3, 30% glycerol, and 0.01% sodium azide.	Storage	at-20°C

### BACKGROUND

Chromatin binding factor that binds to DNA sequence specific sites and regulates the 3D structure of chromatin . Binds together strands of DNA, thus forming chromatin loops, and anchors DNA to cellular structures, such as the nuclear lamina . Defines the boundaries between active and heterochromatic DNA via binding to chromatin insulators, thereby preventing interaction between promoter and nearby enhancers and silencers . Participates in the allele-specific gene expression at the imprinted IGF2/H19 gene locus . On the maternal allele, binding within the H19 imprinting control region (ICR) mediates maternally inherited higher-order chromatin conformation to restrict enhancer access to IGF2 .

### APPLICATION

To ensure optimal assay performance, AREX recommends conducting reagent titration tailored to each testing system for optimal detection results.

WB	1:1000 - 1:2000
----	-----------------

\*Results are sample-specific. Please refer to your local assay conditions and test parameters for reference.

### PRODUCT OVERVIEW

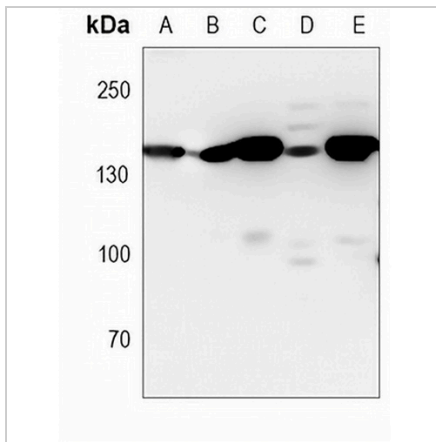
Description	Mouse monoclonal antibody to CTCF
Specificity	Recognizes endogenous levels of CTCF protein.
Antibody Type	Primary antibody
Immunogen	Recombinant fusion protein of human CTCF. The exact sequence is proprietary.
Purification	This antibody is purified through a protein G column.
Molecular Weight	Predicted: 82 kD; Observed: 140 kD
Form/Buffer	Mouse IgG1 kappa. Liquid in PBS, pH 7.3, 30% glycerol, and 0.01% sodium azide.
Alternative Names	Transcriptional repressor CTCF; 11-zinc finger protein; CCCTC-binding factor; CTCFL paralog
Gene Symbol	CTCF
Entrez Gene	10664(Human); 83726(Rat)
SwissProt	P49711(Human); Q9R1D1(Rat)

\*AREX continuously optimizes our products. Webpage content may not reflect the latest updates. For inquiries, please contact [info@arexbio.com](mailto:info@arexbio.com) or your local distributor.

\*Clone Number, Reactivity, Source/Host and Clonality can be found in the product name and Key Features section above.

**DATASHEET****CTCF Mouse Monoclonal Antibody(C3796)**

CAT. NO. AMA03408

**DATA**

Western blot analysis of CTCF expression in K562 (A), Jurkat (B), HeLa (C), C6 (D), MOLT4 (E) whole cell lysates. (Predicted band size: 82 kD; Observed band size: 140 kD)

**STORAGE**

Store at 4°C short term. For long term storage, store at -20°C, avoiding freeze/thaw cycles.

**NOTE**

For Research Use Only. Not for diagnostic, therapeutics, prophylactic or in vivo use.