

DATASHEET
SULT1A1 Mouse Monoclonal Antibody(C3802)
CAT. NO. AMA03414
KEY FEATURES

Target	SULT1A1	Source / Host	Mouse
Reactivity	Human, Mouse, Rat	Clonality	Monoclonal
Applications	WB	Conjugation	Unconjugated
Form / Buffer	Mouse IgG1 kappa. Liquid in PBS, pH 7.3, 30% glycerol, and 0.01% sodium azide.	Storage	at-20°C

BACKGROUND

Sulfotransferase that utilizes 3'-phospho-5'-adenylyl sulfate (PAPS) as sulfonate donor to catalyze the sulfate conjugation of a wide variety of acceptor molecules bearing a hydroxyl or an amine group. Sulfonation increases the water solubility of most compounds, and therefore their renal excretion, but it can also result in bioactivation to form active metabolites. Displays broad substrate specificity for small phenolic compounds. Plays an important role in the sulfonation of endogenous molecules such as steroid hormones as sulfonate donor to catalyze the sulfate conjugation of a wide variety of acceptor molecules bearing a hydroxyl or an amine group.

APPLICATION

To ensure optimal assay performance, AREX recommends conducting reagent titration tailored to each testing system for optimal detection results.

WB	1:500 - 1:1000
----	----------------

*Results are sample-specific. Please refer to your local assay conditions and test parameters for reference.

PRODUCT OVERVIEW

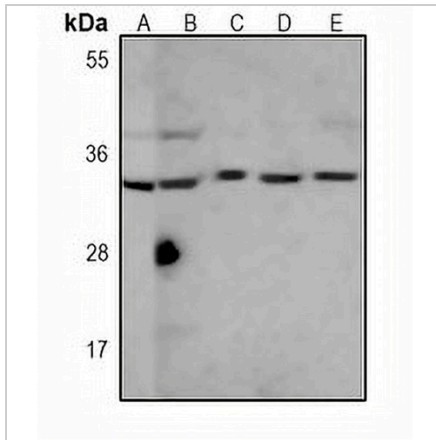
Description	Mouse monoclonal antibody to SULT1A1
Specificity	Recognizes endogenous levels of SULT1A1 protein.
Antibody Type	Primary antibody
Immunogen	Recombinant fusion protein of human SULT1A1. The exact sequence is proprietary.
Purification	This antibody is purified through a protein G column.
Molecular Weight	Predicted: 34 kD; Observed: 34 kD
Form/Buffer	Mouse IgG1 kappa. Liquid in PBS, pH 7.3, 30% glycerol, and 0.01% sodium azide.
Alternative Names	STP; STP1; Sulfotransferase 1A1; ST1A1; Aryl sulfotransferase 1; HAST1/HAST2; Phenol sulfotransferase 1; Phenol-sulfating phenol sulfotransferase 1; P-PST 1; ST1A3; Thermostable phenol sulfotransferase; Ts-PST
Gene Symbol	SULT1A1
Entrez Gene	6817(Human); 83783(Rat)
SwissProt	P50225(Human); P52840(Mouse); P17988(Rat)

*AREX continuously optimizes our products. Webpage content may not reflect the latest updates. For inquiries, please contact info@arexbio.com or your local distributor.

*Clone Number, Reactivity, Source/Host and Clonality can be found in the product name and Key Features section above.

DATASHEET**SULT1A1 Mouse Monoclonal Antibody(C3802)**

CAT. NO. AMA03414

DATA

Western blot analysis of SULT1A1 expression in HepG2 (A), human liver (B), mouse kidney (C), rat brain (D), CHO (E) whole cell lysates. (Predicted band size: 34 kD; Observed band size: 34 kD)

STORAGE

Store at 4°C short term. For long term storage, store at -20°C, avoiding freeze/thaw cycles.

NOTE

For Research Use Only. Not for diagnostic, therapeutics, prophylactic or in vivo use.