

DATASHEET

GBX2 Mouse Monoclonal Antibody(C3816)

CAT. NO. AMA03428

KEY FEATURES

Target	GBX2	Source / Host	Mouse
Reactivity	Human	Clonality	Monoclonal
Applications	WB	Conjugation	Unconjugated
Form / Buffer	Mouse IgM. Supplied in crude ascites with 0.01% sodium azide.	Storage	at-20°C

BACKGROUND

May act as a transcription factor for cell pluripotency and differentiation in the embryo.

APPLICATION

To ensure optimal assay performance, AREX recommends conducting reagent titration tailored to each testing system for optimal detection results.

WB	1:2000 - 1:10000
----	------------------

*Results are sample-specific. Please refer to your local assay conditions and test parameters for reference.

PRODUCT OVERVIEW

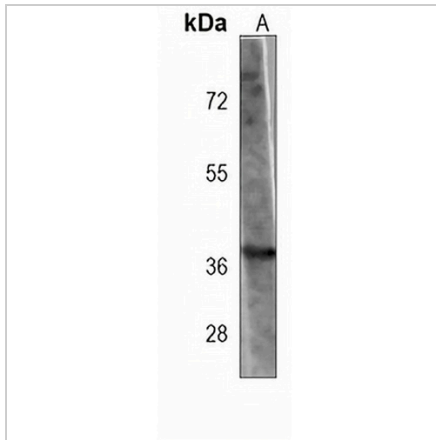
Description	Mouse monoclonal antibody to GBX2
Specificity	Recognizes endogenous levels of GBX2 protein.
Antibody Type	Primary antibody
Immunogen	KLH-conjugated synthetic peptide encompassing a sequence within the center region of human GBX2. The exact sequence is proprietary.
Molecular Weight	Predicted: 37 kD; Observed: 37 kD
Form/Buffer	Mouse IgM. Supplied in crude ascites with 0.01% sodium azide.
Alternative Names	Homeobox protein GBX-2; Gastrulation and brain-specific homeobox protein 2
Gene Symbol	GBX2
Entrez Gene	2637(Human)
SwissProt	P52951(Human)

*AREX continuously optimizes our products. Webpage content may not reflect the latest updates. For inquiries, please contact info@arexbio.com or your local distributor.

*Clone Number, Reactivity, Source/Host and Clonality can be found in the product name and Key Features section above.

DATASHEET**GBX2 Mouse Monoclonal Antibody(C3816)**

CAT. NO. AMA03428

DATA

Western blot analysis of GBX2 expression in human placenta (A) whole cell lysates.
(Predicted band size: 37 kD; Observed band size: 37 kD)

STORAGE

Store at 4°C short term. For long term storage, store at -20°C, avoiding freeze/thaw cycles.

NOTE

For Research Use Only. Not for diagnostic, therapeutics, prophylactic or in vivo use.