

**DATASHEET**
**LIMK1 Mouse Monoclonal Antibody(C3819)**
**CAT. NO. AMA03431**
**KEY FEATURES**

Target	LIMK1	Source / Host	Mouse
Reactivity	Human, Mouse	Clonality	Monoclonal
Applications	WB	Conjugation	Unconjugated
Form / Buffer	Mouse IgM kappa. Liquid in PBS, pH 7.3, 30% glycerol, and 0.01% sodium azide.	Storage	at-20°C

**BACKGROUND**

Serine/threonine-protein kinase that plays an essential role in the regulation of actin filament dynamics. Acts downstream of several Rho family GTPase signal transduction pathways . Activated by upstream kinases including ROCK1, PAK1 and PAK4, which phosphorylate LIMK1 on a threonine residue located in its activation loop . LIMK1 subsequently phosphorylates and inactivates the actin binding/depolymerizing factors cofilin-1/CFL1, cofilin-2/CFL2 and destrin/DSTN, thereby preventing the cleavage of filamentous actin (F-actin), and stabilizing the actin cytoskeleton . In this way LIMK1 regulates several actin-dependent biological processes including cell motility, cell cycle progression, and differentiation . Phosphorylates TPPP on serine residues, thereby promoting microtubule disassembly .

**APPLICATION**

To ensure optimal assay performance, AREX recommends conducting reagent titration tailored to each testing system for optimal detection results.

WB	1:500 - 1:1000
----	----------------

\*Results are sample-specific. Please refer to your local assay conditions and test parameters for reference.

**PRODUCT OVERVIEW**

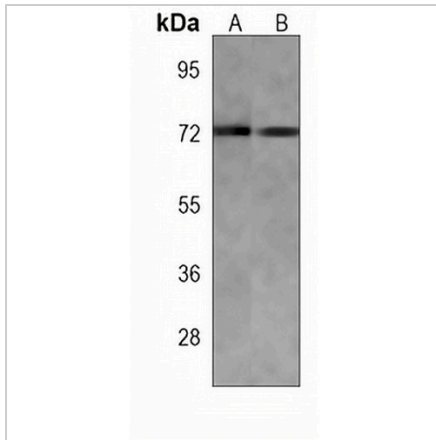
Description	Mouse monoclonal antibody to LIMK1
Specificity	Recognizes endogenous levels of LIMK1 protein.
Antibody Type	Primary antibody
Immunogen	KLH-conjugated synthetic peptide encompassing a sequence within the C-term region of human LIMK1. The exact sequence is proprietary.
Purification	This antibody is purified through a protein G column.
Molecular Weight	Predicted: 72 kD; Observed: 72 kD
Form/Buffer	Mouse IgM kappa. Liquid in PBS, pH 7.3, 30% glycerol, and 0.01% sodium azide.
Alternative Names	LIMK; LIM domain kinase 1; LIMK-1
Gene Symbol	LIMK1
Entrez Gene	3984(Human); 16885(Mouse)
SwissProt	P53667(Human); P53668(Mouse)

\*AREX continuously optimizes our products. Webpage content may not reflect the latest updates. For inquiries, please contact [info@arexbio.com](mailto:info@arexbio.com) or your local distributor.

\*Clone Number, Reactivity, Source/Host and Clonality can be found in the product name and Key Features section above.

**DATASHEET****LIMK1 Mouse Monoclonal Antibody(C3819)**

CAT. NO. AMA03431

**DATA**

Western blot analysis of LIMK1 expression in human brain (A), mouse brain (B) whole cell lysates. (Predicted band size: 72 kD; Observed band size: 72 kD)

**STORAGE**

Store at 4°C short term. For long term storage, store at -20°C, avoiding freeze/thaw cycles.

**NOTE**

For Research Use Only. Not for diagnostic, therapeutics, prophylactic or in vivo use.