

**DATASHEET**

**IL-2 Mouse Monoclonal Antibody(C3835)**

CAT. NO. AMA03447

**KEY FEATURES**

Target	IL-2	Source / Host	Mouse
Reactivity	Human	Clonality	Monoclonal
Applications	WB	Conjugation	Unconjugated
Form / Buffer	Mouse IgG1. Supplied in crude ascites with 0.01% sodium azide.	Storage	at-20°C

**BACKGROUND**

Cytokine produced by activated CD4-positive helper T-cells and to a lesser extent activated CD8-positive T-cells and natural killer (NK) cells that plays pivotal roles in the immune response and tolerance cells that plays pivotal roles in the immune response and tolerance . Binds to a receptor complex composed of either the high-affinity trimeric IL-2R (IL2RA/CD25, IL2RB/CD122 and IL2RG/CD132) or the low-affinity dimeric IL-2R (IL2RB and IL2RG) . Interaction with the receptor leads to oligomerization and conformation changes in the IL-2R subunits resulting in downstream signaling starting with phosphorylation of JAK1 and JAK3 . In turn, JAK1 and JAK3 phosphorylate the receptor to form a docking site leading to the phosphorylation of several substrates including STAT5 .

**APPLICATION**

To ensure optimal assay performance, AREX recommends conducting reagent titration tailored to each testing system for optimal detection results.

WB	1:500 - 1:1000
----	----------------

\*Results are sample-specific. Please refer to your local assay conditions and test parameters for reference.

**PRODUCT OVERVIEW**

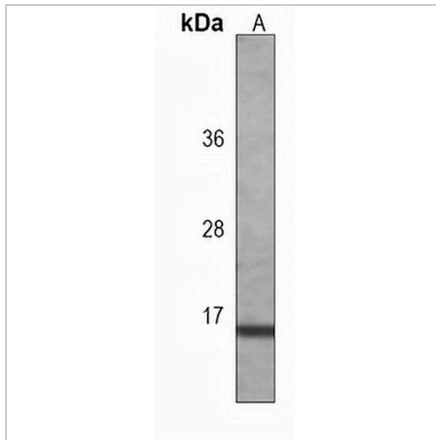
Description	Mouse monoclonal antibody to IL-2
Specificity	Recognizes endogenous levels of IL-2 protein.
Antibody Type	Primary antibody
Immunogen	KLH-conjugated synthetic peptide encompassing a sequence within the center region of human IL-2. The exact sequence is proprietary.
Molecular Weight	Predicted: 17 kD; Observed: 17 kD
Form/Buffer	Mouse IgG1. Supplied in crude ascites with 0.01% sodium azide.
Alternative Names	Interleukin-2; IL-2; T-cell growth factor; TCGF; Aldesleukin
Gene Symbol	IL2
Entrez Gene	3558(Human)
SwissProt	P60568(Human)

\*AREX continuously optimizes our products. Webpage content may not reflect the latest updates. For inquiries, please contact [info@arexbio.com](mailto:info@arexbio.com) or your local distributor.

\*Clone Number, Reactivity, Source/Host and Clonality can be found in the product name and Key Features section above.

**DATASHEET****IL-2 Mouse Monoclonal Antibody(C3835)**

CAT. NO. AMA03447

**DATA**

Western blot analysis of IL-2 expression in K562 (A) whole cell lysates. (Predicted band size: 17 kD; Observed band size: 17 kD)

**STORAGE**

Store at 4°C short term. For long term storage, store at -20°C, avoiding freeze/thaw cycles.

**NOTE**

For Research Use Only. Not for diagnostic, therapeutics, prophylactic or in vivo use.