

DATASHEET

Rbx1 Mouse Monoclonal Antibody(C3848)

CAT. NO. AMA03460

KEY FEATURES

Target	Rbx1	Source / Host	Mouse
Reactivity	Human, Mouse	Clonality	Monoclonal
Applications	WB	Conjugation	Unconjugated
Form / Buffer	Mouse IgG1 kappa. Liquid in PBS, pH 7.3, 30% glycerol, and 0.01% sodium azide.	Storage	at-20°C

BACKGROUND

E3 ubiquitin ligase component of multiple cullin-RING-based E3 ubiquitin-protein ligase (CRLs) complexes which mediate the ubiquitination and subsequent proteasomal degradation of target proteins, including proteins involved in cell cycle progression, signal transduction, transcription and transcription-coupled nucleotide excision repair complexes which mediate the ubiquitination and subsequent proteasomal degradation of target proteins, including proteins involved in cell cycle progression, signal transduction, transcription and transcription-coupled nucleotide excision repair . CRLs complexes and ARIH1 collaborate in tandem to mediate ubiquitination of target proteins, ARIH1 mediating addition of the first ubiquitin on CRLs targets .

APPLICATION

To ensure optimal assay performance, AREX recommends conducting reagent titration tailored to each testing system for optimal detection results.

WB	1:500 - 1:1000
----	----------------

*Results are sample-specific. Please refer to your local assay conditions and test parameters for reference.

PRODUCT OVERVIEW

Description	Mouse monoclonal antibody to Rbx1
Specificity	Recognizes endogenous levels of Rbx1 protein.
Antibody Type	Primary antibody
Immunogen	Recombinant fusion protein of human Rbx1. The exact sequence is proprietary.
Purification	This antibody is purified through a protein G column.
Molecular Weight	Predicted: 12 kD; Observed: 12 kD
Form/Buffer	Mouse IgG1 kappa. Liquid in PBS, pH 7.3, 30% glycerol, and 0.01% sodium azide.
Alternative Names	RNF75; ROC1; E3 ubiquitin-protein ligase RBX1; Protein ZYP; RING finger protein 75; RING-box protein 1; Rbx1; Regulator of cullins 1
Gene Symbol	RBX1
Entrez Gene	9978(Human); 56438(Mouse)
SwissProt	P62877(Human); P62878(Mouse)

*AREX continuously optimizes our products. Webpage content may not reflect the latest updates. For inquiries, please contact info@arex.bio or your local distributor.

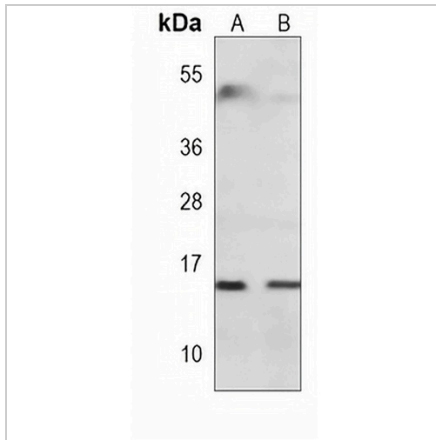
*Clone Number, Reactivity, Source/Host and Clonality can be found in the product name and Key Features section above.

DATASHEET

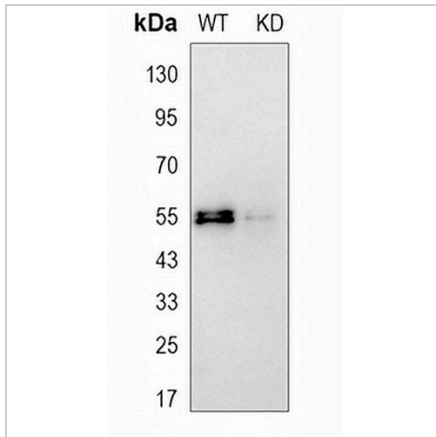
Rbx1 Mouse Monoclonal Antibody(C3848)

CAT. NO. AMA03460

DATA



Western blot analysis of Rbx1 expression in HeLa (A), NIH3T3 (B) whole cell lysates. (Predicted band size: 12 kD; Observed band size: 12 kD)



Western blot analysis of Rbx1 expression in wild type (WT) and knockdown (KD) HT1080 cell lysates.

STORAGE

Store at 4°C short term. For long term storage, store at -20°C, avoiding freeze/thaw cycles.

NOTE

For Research Use Only. Not for diagnostic, therapeutics, prophylactic or in vivo use.