

DATASHEET

MC1 Receptor Mouse Monoclonal Antibody(C3866)

CAT. NO. AMA03478

KEY FEATURES

Target	MC1 Receptor	Source / Host	Mouse
Reactivity	Human	Clonality	Monoclonal
Applications	WB	Conjugation	Unconjugated
Form / Buffer	Mouse IgM. Liquid in PBS, pH 7.3, 30% glycerol, and 0.01% sodium azide.	Storage	at-20°C

BACKGROUND

G protein-coupled receptor that binds melanocyte-stimulating hormones (alpha, beta, and gamma-MSH) and adrenocorticotrophic hormone/ACTH, which are peptide products of the POMC precursor protein and adrenocorticotrophic hormone/ACTH, which are peptide products of the POMC precursor protein . Upon activation, MC1R couples with the G(s) protein, stimulating adenylate cyclase and activating the cAMP-dependent signaling pathway. This activation promotes melanogenesis, resulting in the production of eumelanin (black/brown) and pheomelanin (red/yellow) in melanocytes . MC1R interacts with G protein-coupled receptor opsin 3/OPN3, which couples to G(i) proteins and inhibits the alpha-MSH-induced cAMP response, thereby reducing melanin synthesis .

APPLICATION

To ensure optimal assay performance, AREX recommends conducting reagent titration tailored to each testing system for optimal detection results.

WB	1:500 - 1:1000
----	----------------

*Results are sample-specific. Please refer to your local assay conditions and test parameters for reference.

PRODUCT OVERVIEW

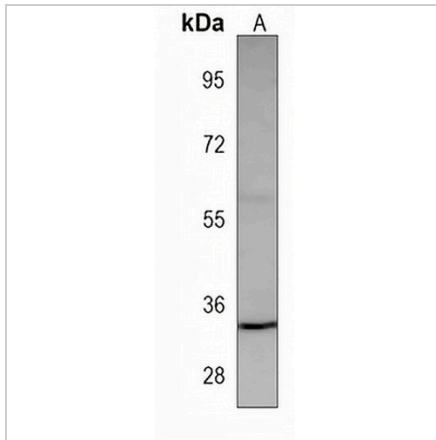
Description	Mouse monoclonal antibody to MC1 Receptor
Specificity	Recognizes endogenous levels of MC1 Receptor protein.
Antibody Type	Primary antibody
Immunogen	KLH-conjugated synthetic peptide encompassing a sequence within the center region of human MC1 Receptor. The exact sequence is proprietary.
Purification	This antibody is purified through a protein G column.
Molecular Weight	Predicted: 34 kD; Observed: 34 kD
Form/Buffer	Mouse IgM. Liquid in PBS, pH 7.3, 30% glycerol, and 0.01% sodium azide.
Alternative Names	MSHR; Melanocyte-stimulating hormone receptor; MSH-R; Melanocortin receptor 1; MC1-R
Gene Symbol	MC1R
Entrez Gene	4157(Human)
SwissProt	Q01726(Human)

*AREX continuously optimizes our products. Webpage content may not reflect the latest updates. For inquiries, please contact info@arexbio.com or your local distributor.

*Clone Number, Reactivity, Source/Host and Clonality can be found in the product name and Key Features section above.

DATASHEET**MC1 Receptor Mouse Monoclonal Antibody(C3866)**

CAT. NO. AMA03478

DATA

Western blot analysis of MC1 Receptor expression in A375 (A) whole cell lysates.
(Predicted band size: 34 kD; Observed band size: 34 kD)

STORAGE

Store at 4°C short term. For long term storage, store at -20°C, avoiding freeze/thaw cycles.

NOTE

For Research Use Only. Not for diagnostic, therapeutics, prophylactic or in vivo use.