

DATASHEET

LLH Mouse Monoclonal Antibody(C3870)

CAT. NO. AMA03482

KEY FEATURES

Target	LLH	Source / Host	Mouse
Reactivity	Human	Clonality	Monoclonal
Applications	WB	Conjugation	Unconjugated
Form / Buffer	Mouse IgG2b kappa. Liquid in PBS, pH 7.3, 30% glycerol, and 0.01% sodium azide.	Storage	at-20°C

BACKGROUND

Part of a complex composed of PLOD1, P3H3 and P3H4 that catalyzes hydroxylation of lysine residues in collagen alpha chains and is required for normal assembly and cross-linking of collagen fibrils. Forms hydroxylysine residues in -Xaa-Lys-Gly-sequences in collagens. These hydroxylysines serve as sites of attachment for carbohydrate units and are essential for the stability of the intermolecular collagen cross-links (Probable).

APPLICATION

To ensure optimal assay performance, AREX recommends conducting reagent titration tailored to each testing system for optimal detection results.

WB	1:1000 - 1:2000
----	-----------------

*Results are sample-specific. Please refer to your local assay conditions and test parameters for reference.

PRODUCT OVERVIEW

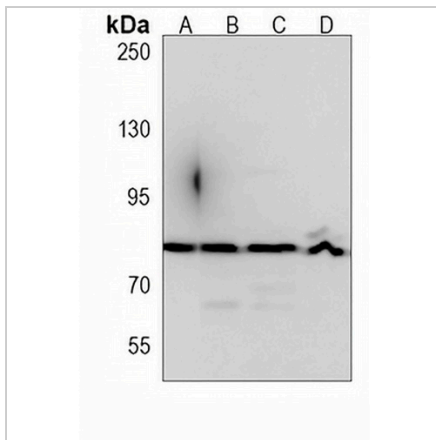
Description	Mouse monoclonal antibody to LLH
Specificity	Recognizes endogenous levels of LLH protein.
Antibody Type	Primary antibody
Immunogen	KLH-conjugated synthetic peptide encompassing a sequence within the C-term region of human LLH. The exact sequence is proprietary.
Purification	This antibody is purified through a protein G column.
Molecular Weight	Predicted: 83 kD; Observed: 84 kD
Form/Buffer	Mouse IgG2b kappa. Liquid in PBS, pH 7.3, 30% glycerol, and 0.01% sodium azide.
Alternative Names	LLH; PLOD; Procollagen-lysine,2-oxoglutarate 5-dioxygenase 1; Lysyl hydroxylase 1; LH1
Gene Symbol	PLOD1
Entrez Gene	5351(Human)
SwissProt	Q02809(Human)

*AREX continuously optimizes our products. Webpage content may not reflect the latest updates. For inquiries, please contact info@arexbio.com or your local distributor.

*Clone Number, Reactivity, Source/Host and Clonality can be found in the product name and Key Features section above.

DATASHEET**LLH Mouse Monoclonal Antibody(C3870)**

CAT. NO. AMA03482

DATA

Western blot analysis of LLH expression in U87MG (A), K562 (B), HeLa (C), A431 (D) whole cell lysates. (Predicted band size: 83 kD; Observed band size: 84 kD)

STORAGE

Store at 4°C short term. For long term storage, store at -20°C, avoiding freeze/thaw cycles.

NOTE

For Research Use Only. Not for diagnostic, therapeutics, prophylactic or in vivo use.