

## DATASHEET

# PAX8 Mouse Monoclonal Antibody(C3877)

CAT. NO. AMA03489

### KEY FEATURES

Target	PAX8	Source / Host	Mouse
Reactivity	Human	Clonality	Monoclonal
Applications	WB	Conjugation	Unconjugated
Form / Buffer	Mouse IgG1 kappa. Liquid in PBS, pH 7.3, 30% glycerol, and 0.01% sodium azide.	Storage	at-20°C

### BACKGROUND

Transcription factor for the thyroid-specific expression of the genes exclusively expressed in the thyroid cell type, maintaining the functional differentiation of such cells.

### APPLICATION

To ensure optimal assay performance, AREX recommends conducting reagent titration tailored to each testing system for optimal detection results.

WB	1:1000 - 1:2000
----	-----------------

\*Results are sample-specific. Please refer to your local assay conditions and test parameters for reference.

### PRODUCT OVERVIEW

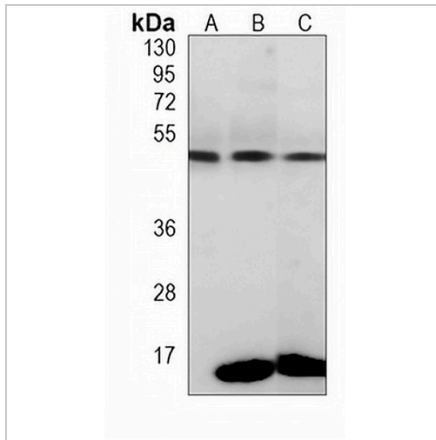
Description	Mouse monoclonal antibody to PAX8
Specificity	Recognizes endogenous levels of PAX8 protein.
Antibody Type	Primary antibody
Immunogen	Recombinant fusion protein of human PAX8. The exact sequence is proprietary.
Purification	This antibody is purified through a protein G column.
Molecular Weight	Predicted: 48 kD; Observed: 48 kD
Form/Buffer	Mouse IgG1 kappa. Liquid in PBS, pH 7.3, 30% glycerol, and 0.01% sodium azide.
Alternative Names	Paired box protein Pax-8
Gene Symbol	PAX8
Entrez Gene	7849(Human)
SwissProt	Q06710(Human)

\*AREX continuously optimizes our products. Webpage content may not reflect the latest updates. For inquiries, please contact [info@arexbio.com](mailto:info@arexbio.com) or your local distributor.

\*Clone Number, Reactivity, Source/Host and Clonality can be found in the product name and Key Features section above.

**DATASHEET****PAX8 Mouse Monoclonal Antibody(C3877)**

CAT. NO. AMA03489

**DATA**

Western blot analysis of PAX8 expression in HeLa (A), Raji (B), SKOV3 (C) whole cell lysates. (Predicted band size: 48 kD; Observed band size: 48 kD)

**STORAGE**

Store at 4°C short term. For long term storage, store at -20°C, avoiding freeze/thaw cycles.

**NOTE**

For Research Use Only. Not for diagnostic, therapeutics, prophylactic or in vivo use.