

DATASHEET

AKAP13 Mouse Monoclonal Antibody(C3883)

CAT. NO. AMA03495

KEY FEATURES

Target	AKAP13	Source / Host	Mouse
Reactivity	Human	Clonality	Monoclonal
Applications	WB	Conjugation	Unconjugated
Form / Buffer	Mouse IgG1 kappa. Liquid in PBS, pH 7.3, 30% glycerol, and 0.01% sodium azide.	Storage	at-20°C

BACKGROUND

Scaffold protein that plays an important role in assembling signaling complexes downstream of several types of G protein-coupled receptors. Activates RHOA in response to signaling via G protein-coupled receptors via its function as Rho guanine nucleotide exchange factor . May also activate other Rho family members . Part of a kinase signaling complex that links ADRA1A and ADRA1B adrenergic receptor signaling to the activation of downstream p38 MAP kinases, such as MAPK11 and MAPK14 . Part of a signaling complex that links ADRA1B signaling to the activation of RHOA and IKBKB/IKKB, leading to increased NF-kappa-B transcriptional activity .

APPLICATION

To ensure optimal assay performance, AREX recommends conducting reagent titration tailored to each testing system for optimal detection results.

WB	1:500 - 1:4000
----	----------------

*Results are sample-specific. Please refer to your local assay conditions and test parameters for reference.

PRODUCT OVERVIEW

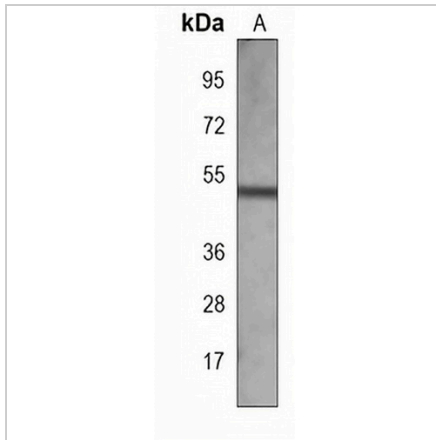
Description	Mouse monoclonal antibody to AKAP13
Specificity	Recognizes endogenous levels of AKAP13 protein.
Antibody Type	Primary antibody
Immunogen	KLH-conjugated synthetic peptide encompassing a sequence within the N-term region of human AKAP13. The exact sequence is proprietary.
Purification	This antibody is purified through a protein G column.
Molecular Weight	Predicted: 307 kD; Observed: 50 kD
Form/Buffer	Mouse IgG1 kappa. Liquid in PBS, pH 7.3, 30% glycerol, and 0.01% sodium azide.
Alternative Names	BRX; HT31; LBC; A-kinase anchor protein 13; AKAP-13; AKAP-Lbc; Breast cancer nuclear receptor-binding auxiliary protein; Guanine nucleotide exchange factor Lbc; Human thyroid-anchoring protein 31; Lymphoid blast crisis oncogene; LBC oncogene; Non-oncogenic Rho GTPase-specific GTP exchange factor; Protein kinase A-anchoring protein 13; PRKA13; p47
Gene Symbol	AKAP13
Entrez Gene	11214(Human)
SwissProt	Q12802(Human)

*AREX continuously optimizes our products. Webpage content may not reflect the latest updates. For inquiries, please contact info@arexbio.com or your local distributor.

*Clone Number, Reactivity, Source/Host and Clonality can be found in the product name and Key Features section above.

DATASHEET**AKAP13 Mouse Monoclonal Antibody(C3883)**

CAT. NO. AMA03495

DATA

Western blot analysis of AKAP13 expression in recombinant protein (A) whole cell lysates.
(Predicted band size: 307 kD; Observed band size: 50 kD)

STORAGE

Store at 4°C short term. For long term storage, store at -20°C, avoiding freeze/thaw cycles.

NOTE

For Research Use Only. Not for diagnostic, therapeutics, prophylactic or in vivo use.