

DATASHEET

CRY2 Mouse Monoclonal Antibody(C3920)

CAT. NO. AMA03532

KEY FEATURES

| | | | |
|---------------|--|---------------|--------------|
| Target | CRY2 | Source / Host | Mouse |
| Reactivity | Human, Mouse | Clonality | Monoclonal |
| Applications | WB | Conjugation | Unconjugated |
| Form / Buffer | Mouse IgG1 kappa. Liquid in PBS, pH 7.3, 30% glycerol, and 0.01% sodium azide. | Storage | at-20°C |

BACKGROUND

Transcriptional repressor which forms a core component of the circadian clock. The circadian clock, an internal time-keeping system, regulates various physiological processes through the generation of approximately 24 hour circadian rhythms in gene expression, which are translated into rhythms in metabolism and behavior. It is derived from the Latin roots 'circa' (about) and 'diem' (day) and acts as an important regulator of a wide array of physiological functions including metabolism, sleep, body temperature, blood pressure, endocrine, immune, cardiovascular, and renal function. Consists of two major components: the central clock, residing in the suprachiasmatic nucleus (SCN) of the brain, and the peripheral clocks that are present in nearly every tissue and organ system.

APPLICATION

To ensure optimal assay performance, AREX recommends conducting reagent titration tailored to each testing system for optimal detection results.

| | |
|----|-----------------|
| WB | 1:1000 - 1:2000 |
|----|-----------------|

*Results are sample-specific. Please refer to your local assay conditions and test parameters for reference.

PRODUCT OVERVIEW

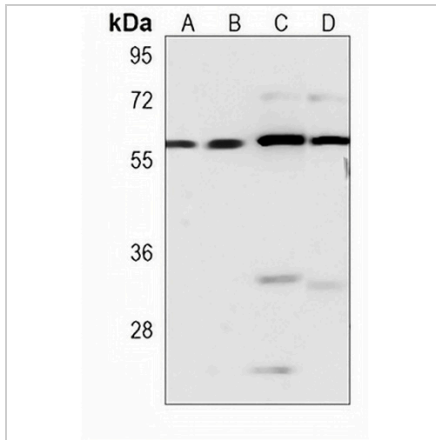
| | |
|-------------------|--|
| Description | Mouse monoclonal antibody to CRY2 |
| Specificity | Recognizes endogenous levels of CRY2 protein. |
| Antibody Type | Primary antibody |
| Immunogen | Recombinant fusion protein of human CRY2. The exact sequence is proprietary. |
| Purification | This antibody is purified through a protein G column. |
| Molecular Weight | Predicted: 66 kD; Observed: 67 kD |
| Form/Buffer | Mouse IgG1 kappa. Liquid in PBS, pH 7.3, 30% glycerol, and 0.01% sodium azide. |
| Alternative Names | KIAA0658; Cryptochrome-2 |
| Gene Symbol | CRY2 |
| Entrez Gene | 1408(Human); 12953(Mouse) |
| SwissProt | Q49AN0(Human); Q9R194(Mouse) |

*AREX continuously optimizes our products. Webpage content may not reflect the latest updates. For inquiries, please contact info@arexbio.com or your local distributor.

*Clone Number, Reactivity, Source/Host and Clonality can be found in the product name and Key Features section above.

DATASHEET**CRY2 Mouse Monoclonal Antibody(C3920)**

CAT. NO. AMA03532

DATA

Western blot analysis of CRY2 expression in HepG2 (A), human heart (B), human liver (C), mouse liver (D) whole cell lysates. (Predicted band size: 66 kD; Observed band size: 67 kD)

STORAGE

Store at 4°C short term. For long term storage, store at -20°C, avoiding freeze/thaw cycles.

NOTE

For Research Use Only. Not for diagnostic, therapeutics, prophylactic or in vivo use.