

DATASHEET

Borealin Mouse Monoclonal Antibody(C3921)

CAT. NO. AMA03533

KEY FEATURES

| | | | |
|---------------|--|---------------|--------------|
| Target | Borealin | Source / Host | Mouse |
| Reactivity | Human | Clonality | Monoclonal |
| Applications | WB | Conjugation | Unconjugated |
| Form / Buffer | Mouse IgG1 kappa. Liquid in PBS, pH 7.3, 30% glycerol, and 0.01% sodium azide. | Storage | at-20°C |

BACKGROUND

Component of the chromosomal passenger complex (CPC), a complex that acts as a key regulator of mitosis. The CPC complex has essential functions at the centromere in ensuring correct chromosome alignment and segregation and is required for chromatin-induced microtubule stabilization and spindle assembly. Major effector of the TTK kinase in the control of attachment-error-correction and chromosome alignment.

APPLICATION

To ensure optimal assay performance, AREX recommends conducting reagent titration tailored to each testing system for optimal detection results.

| | |
|----|----------------|
| WB | 1:500 - 1:1000 |
|----|----------------|

*Results are sample-specific. Please refer to your local assay conditions and test parameters for reference.

PRODUCT OVERVIEW

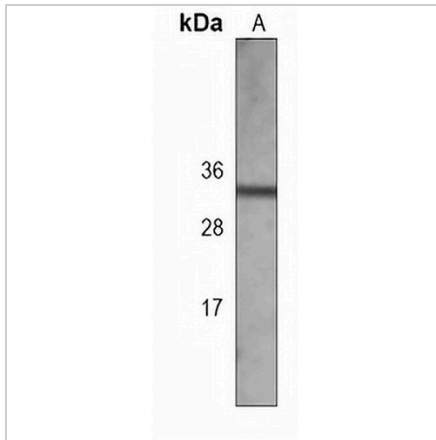
| | |
|-------------------|--|
| Description | Mouse monoclonal antibody to Borealin |
| Specificity | Recognizes endogenous levels of Borealin protein. |
| Antibody Type | Primary antibody |
| Immunogen | Recombinant fusion protein of human Borealin. The exact sequence is proprietary. |
| Purification | This antibody is purified through a protein G column. |
| Molecular Weight | Predicted: 31 kD; Observed: 31 kD |
| Form/Buffer | Mouse IgG1 kappa. Liquid in PBS, pH 7.3, 30% glycerol, and 0.01% sodium azide. |
| Alternative Names | PESCRG3; Borealin; Cell division cycle-associated protein 8; Dasra-B; hDasra-B; Pluripotent embryonic stem cell-related gene 3 protein |
| Gene Symbol | CDCA8 |
| Entrez Gene | 55143(Human) |
| SwissProt | Q53HL2(Human) |

*AREX continuously optimizes our products. Webpage content may not reflect the latest updates. For inquiries, please contact info@arexbio.com or your local distributor.

*Clone Number, Reactivity, Source/Host and Clonality can be found in the product name and Key Features section above.

DATASHEET**Borealin Mouse Monoclonal Antibody(C3921)**

CAT. NO. AMA03533

DATA

Western blot analysis of Borealin expression in U251 (A) whole cell lysates. (Predicted band size: 31 kD; Observed band size: 31 kD)

STORAGE

Store at 4°C short term. For long term storage, store at -20°C, avoiding freeze/thaw cycles.

NOTE

For Research Use Only. Not for diagnostic, therapeutics, prophylactic or in vivo use.