

DATASHEET

REG3 gamma Mouse Monoclonal Antibody(C3933)

CAT. NO. AMA03545

KEY FEATURES

Target	REG3 gamma	Source / Host	Mouse
Reactivity	Human	Clonality	Monoclonal
Applications	WB, IHC	Conjugation	Unconjugated
Form / Buffer	Mouse IgG1 kappa. Liquid in PBS, pH 7.3, 30% glycerol, and 0.01% sodium azide.	Storage	at-20°C

BACKGROUND

Bactericidal C-type lectin which acts exclusively against Gram-positive bacteria and mediates bacterial killing by binding to surface-exposed carbohydrate moieties of peptidoglycan. Restricts bacterial colonization of the intestinal epithelial surface and consequently limits activation of adaptive immune responses by the microbiota.

APPLICATION

To ensure optimal assay performance, AREX recommends conducting reagent titration tailored to each testing system for optimal detection results.

WB	1:500 - 1:1000
IHC	1:50 - 1:200

*Results are sample-specific. Please refer to your local assay conditions and test parameters for reference.

PRODUCT OVERVIEW

Description	Mouse monoclonal antibody to REG3 gamma
Specificity	Recognizes endogenous levels of REG3 gamma protein.
Antibody Type	Primary antibody
Immunogen	Recombinant fusion protein of human REG3 gamma. The exact sequence is proprietary.
Purification	This antibody is purified through a protein G column.
Molecular Weight	Predicted: 19 kD; Observed: 15; 16.5 kD
Form/Buffer	Mouse IgG1 kappa. Liquid in PBS, pH 7.3, 30% glycerol, and 0.01% sodium azide.
Alternative Names	PAP1B; Regenerating islet-derived protein 3-gamma; REG-3-gamma; Pancreatitis-associated protein 1B; PAP-1B; Pancreatitis-associated protein IB; PAP IB; Regenerating islet-derived protein III-gamma; REG III; Reg III-gamma
Gene Symbol	REG3G
Entrez Gene	130120(Human)
SwissProt	Q6UW15(Human)

*AREX continuously optimizes our products. Webpage content may not reflect the latest updates. For inquiries, please contact info@arexbio.com or your local distributor.

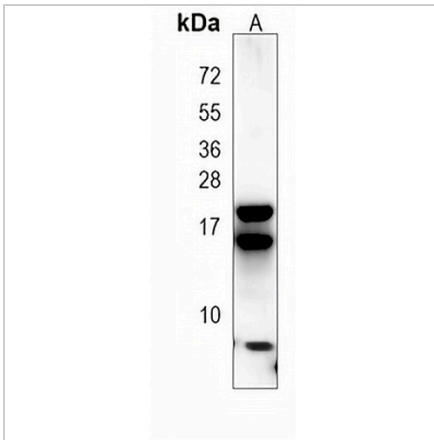
*Clone Number, Reactivity, Source/Host and Clonality can be found in the product name and Key Features section above.

DATASHEET

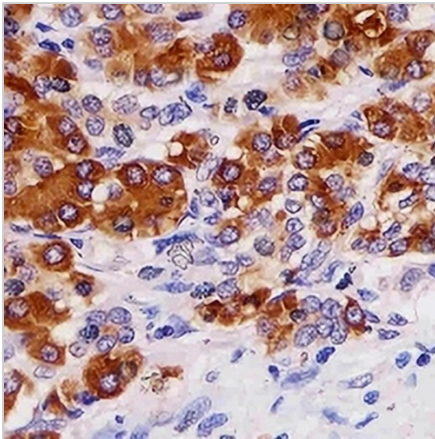
REG3 gamma Mouse Monoclonal Antibody(C3933)

CAT. NO. AMA03545

DATA



Western blot analysis of REG3 gamma expression in human pancreas (A) whole cell lysates. (Predicted band size: 19 kD; Observed band size: 15; 16.5 kD)



Immunohistochemical analysis of REG3 gamma staining in human pancreas formalin fixed paraffin embedded tissue section. The section was pre-treated using heat mediated antigen retrieval with sodium citrate buffer (pH 6.0). The section was then incubated with the antibody at room temperature and detected using an HRP conjugated compact polymer system. DAB was used as the chromogen. The section was then counterstained with haematoxylin and mounted with DPX.

STORAGE

Store at 4°C short term. For long term storage, store at -20°C, avoiding freeze/thaw cycles.

NOTE

For Research Use Only. Not for diagnostic, therapeutics, prophylactic or in vivo use.