

DATASHEET

LIN28B Mouse Monoclonal Antibody(C3936)

CAT. NO. AMA03548

KEY FEATURES

Target	LIN28B	Source / Host	Mouse
Reactivity	Human	Clonality	Monoclonal
Applications	WB	Conjugation	Unconjugated
Form / Buffer	Mouse IgG1 kappa. Liquid in PBS, pH 7.3, 30% glycerol, and 0.01% sodium azide.	Storage	at-20°C

BACKGROUND

Suppressor of microRNA (miRNA) biogenesis, including that of let-7 and possibly of miR107, miR-143 and miR-200c. Binds primary let-7 transcripts (pri-let-7), including pri-let-7g and pri-let-7a-1, and sequester them in the nucleolus, away from the microprocessor complex, hence preventing their processing into mature miRNA biogenesis, including that of let-7 and possibly of miR107, miR-143 and miR-200c. Binds primary let-7 transcripts (pri-let-7), including pri-let-7g and pri-let-7a-1, and sequester them in the nucleolus, away from the microprocessor complex, hence preventing their processing into mature miRNA . Does not act on pri-miR21 .

APPLICATION

To ensure optimal assay performance, AREX recommends conducting reagent titration tailored to each testing system for optimal detection results.

WB	1:1000 - 1:2000
----	-----------------

*Results are sample-specific. Please refer to your local assay conditions and test parameters for reference.

PRODUCT OVERVIEW

Description	Mouse monoclonal antibody to LIN28B
Specificity	Recognizes endogenous levels of LIN28B protein.
Antibody Type	Primary antibody
Immunogen	Recombinant fusion protein of human LIN28B. The exact sequence is proprietary.
Purification	This antibody is purified through a protein G column.
Molecular Weight	Predicted: 27 kD; Observed: 32 kD
Form/Buffer	Mouse IgG1 kappa. Liquid in PBS, pH 7.3, 30% glycerol, and 0.01% sodium azide.
Alternative Names	CSDD2; Protein lin-28 homolog B; Lin-28B
Gene Symbol	LIN28B
Entrez Gene	389421(Human)
SwissProt	Q6ZN17(Human)

*AREX continuously optimizes our products. Webpage content may not reflect the latest updates. For inquiries, please contact info@arexbio.com or your local distributor.

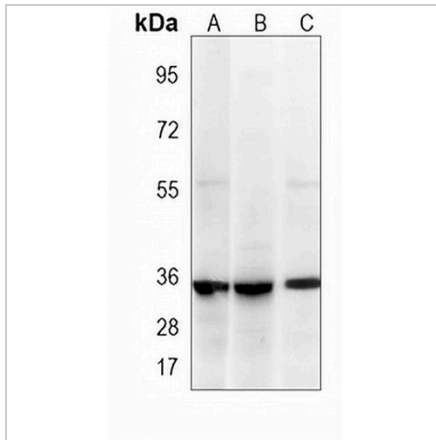
*Clone Number, Reactivity, Source/Host and Clonality can be found in the product name and Key Features section above.

DATASHEET

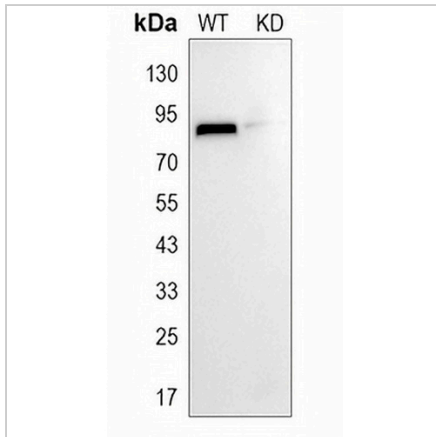
LIN28B Mouse Monoclonal Antibody(C3936)

CAT. NO. AMA03548

DATA



Western blot analysis of LIN28B expression in 293 (A), K562 (B), HepG2 (C) whole cell lysates. (Predicted band size: 27 kD; Observed band size: 32 kD)



Western blot analysis of LIN28B expression in wild type (WT) and knockdown (KD) HeLa cell lysates.

STORAGE

Store at 4°C short term. For long term storage, store at -20°C, avoiding freeze/thaw cycles.

NOTE

For Research Use Only. Not for diagnostic, therapeutics, prophylactic or in vivo use.