

**DATASHEET**

**BANP Mouse Monoclonal Antibody(C3947)**

CAT. NO. AMA03559

**KEY FEATURES**

Target	BANP	Source / Host	Mouse
Reactivity	Human	Clonality	Monoclonal
Applications	WB, IHC	Conjugation	Unconjugated
Form / Buffer	Mouse IgG1 kappa. Liquid in PBS, pH 7.3, 30% glycerol, and 0.01% sodium azide.	Storage	at-20°C

**BACKGROUND**

Controls V(D)J recombination during T-cell development by repressing T-cell receptor (TCR) beta enhancer function . Binds to scaffold/matrix attachment region beta (S/MARbeta), an ATC-rich DNA sequence located upstream of the TCR beta enhancer . Represses cyclin D1 transcription by recruiting HDAC1 to its promoter, thereby diminishing H3K9ac, H3S10ph and H4K8ac levels J recombination during T-cell development by repressing T-cell receptor (TCR) beta enhancer function . Binds to scaffold/matrix attachment region beta (S/MARbeta), an ATC-rich DNA sequence located upstream of the TCR beta enhancer . Represses cyclin D1 transcription by recruiting HDAC1 to its promoter, thereby diminishing H3K9ac, H3S10ph and H4K8ac levels . Promotes TP53 activation, which causes cell cycle arrest .

**APPLICATION**

To ensure optimal assay performance, AREX recommends conducting reagent titration tailored to each testing system for optimal detection results.

WB	1:500 - 1:1000
IHC	1:50 - 1:200

\*Results are sample-specific. Please refer to your local assay conditions and test parameters for reference.

**PRODUCT OVERVIEW**

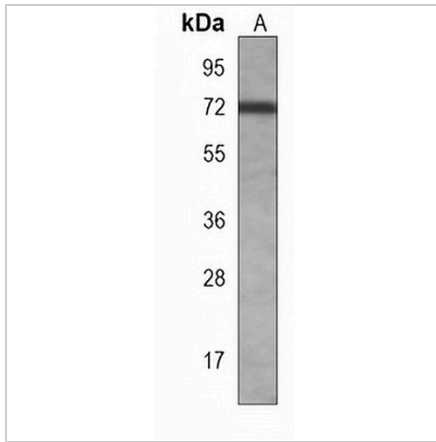
Description	Mouse monoclonal antibody to BANP
Specificity	Recognizes endogenous levels of BANP protein.
Antibody Type	Primary antibody
Immunogen	Recombinant fusion protein of human BANP. The exact sequence is proprietary.
Purification	This antibody is purified through a protein G column.
Molecular Weight	Predicted: 56 kD; Observed: 70 kD
Form/Buffer	Mouse IgG1 kappa. Liquid in PBS, pH 7.3, 30% glycerol, and 0.01% sodium azide.
Alternative Names	BEND1; SMAR1; Protein BANP; BEN domain-containing protein 1; Btg3-associated nuclear protein; Scaffold/matrix-associated region-1-binding protein
Gene Symbol	BANP
Entrez Gene	54971(Human)
SwissProt	Q8N9N5(Human)

\*AREX continuously optimizes our products. Webpage content may not reflect the latest updates. For inquiries, please contact [info@arexbio.com](mailto:info@arexbio.com) or your local distributor.

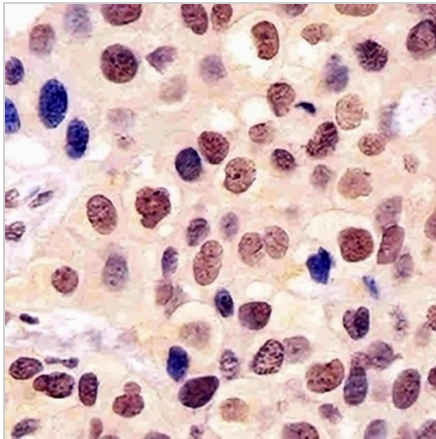
\*Clone Number, Reactivity, Source/Host and Clonality can be found in the product name and Key Features section above.

**DATASHEET****BANP Mouse Monoclonal Antibody(C3947)**

CAT. NO. AMA03559

**DATA**

Western blot analysis of BANP expression in HeLa (A) whole cell lysates. (Predicted band size: 56 kD; Observed band size: 70 kD)



Immunohistochemical analysis of BANP staining in human breast carcinoma formalin fixed paraffin embedded tissue section. The section was pre-treated using heat mediated antigen retrieval with sodium citrate buffer (pH 6.0). The section was then incubated with the antibody at room temperature and detected using an HRP conjugated compact polymer system. DAB was used as the chromogen. The section was then counterstained with haematoxylin and mounted with DPX.

**STORAGE**

Store at 4°C short term. For long term storage, store at -20°C, avoiding freeze/thaw cycles.

**NOTE**

For Research Use Only. Not for diagnostic, therapeutics, prophylactic or in vivo use.