

DATASHEET

MCFD2 Mouse Monoclonal Antibody(C3951)

CAT. NO. AMA03563

KEY FEATURES

Target	MCFD2	Source / Host	Mouse
Reactivity	Human	Clonality	Monoclonal
Applications	WB	Conjugation	Unconjugated
Form / Buffer	Mouse IgG1 kappa. Liquid in PBS, pH 7.3, 30% glycerol, and 0.01% sodium azide.	Storage	at-20°C

BACKGROUND

The MCFD2-LMAN1 complex forms a specific cargo receptor for the ER-to-Golgi transport of selected proteins. Plays a role in the secretion of coagulation factors.

APPLICATION

To ensure optimal assay performance, AREX recommends conducting reagent titration tailored to each testing system for optimal detection results.

WB	1:500 - 1:1000
----	----------------

*Results are sample-specific. Please refer to your local assay conditions and test parameters for reference.

PRODUCT OVERVIEW

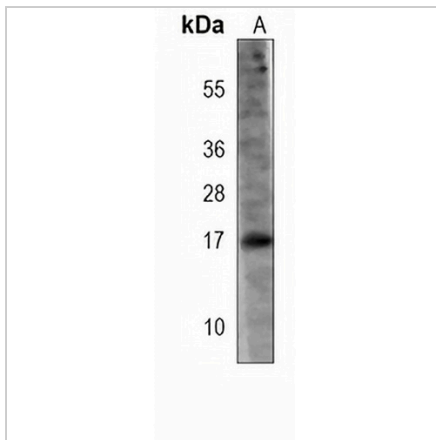
Description	Mouse monoclonal antibody to MCFD2
Specificity	Recognizes endogenous levels of MCFD2 protein.
Antibody Type	Primary antibody
Immunogen	Recombinant fusion protein of human MCFD2. The exact sequence is proprietary.
Purification	This antibody is purified through a protein G column.
Molecular Weight	Predicted: 16 kD; Observed: 17 kD
Form/Buffer	Mouse IgG1 kappa. Liquid in PBS, pH 7.3, 30% glycerol, and 0.01% sodium azide.
Alternative Names	SDNSF; Multiple coagulation factor deficiency protein 2; Neural stem cell-derived neuronal survival protein
Gene Symbol	MCFD2
Entrez Gene	90411(Human)
SwissProt	Q8NI22(Human)

*AREX continuously optimizes our products. Webpage content may not reflect the latest updates. For inquiries, please contact info@arexbio.com or your local distributor.

*Clone Number, Reactivity, Source/Host and Clonality can be found in the product name and Key Features section above.

DATASHEET**MCFD2 Mouse Monoclonal Antibody(C3951)**

CAT. NO. AMA03563

DATA

Western blot analysis of MCFD2 expression in 293T (A) whole cell lysates. (Predicted band size: 16 kD; Observed band size: 17 kD)

STORAGE

Store at 4°C short term. For long term storage, store at -20°C, avoiding freeze/thaw cycles.

NOTE

For Research Use Only. Not for diagnostic, therapeutics, prophylactic or in vivo use.