

DATASHEET

LYPD6B Mouse Monoclonal Antibody(C3952)

CAT. NO. AMA03564

KEY FEATURES

Target	LYPD6B	Source / Host	Mouse
Reactivity	Human, Mouse	Clonality	Monoclonal
Applications	WB	Conjugation	Unconjugated
Form / Buffer	Mouse IgG2b. Supplied in crude ascites with 0.01% sodium azide.	Storage	at-20°C

BACKGROUND

Likely acts as a modulator of nicotinic acetylcholine receptors (nAChRs) activity activity . In vitro acts on nAChRs in a subtype- and stoichiometry-dependent manner . Modulates specifically alpha-3(3):beta-4(2) nAChRs by enhancing the sensitivity to ACh, decreasing ACh-induced maximal current response and increasing the rate of desensitization to ACh; has no effect on alpha-7 homomeric nAChRs; modulates alpha-3(2):alpha-5:beta-4(2) nAChRs in the context of CHRNA5/alpha-5 variant Asn-398 but not its wild-type sequence . However, according to another report in vitro it can weakly inhibits alpha-7 nAChRs .

APPLICATION

To ensure optimal assay performance, AREX recommends conducting reagent titration tailored to each testing system for optimal detection results.

WB	1:500 - 1:2000
----	----------------

*Results are sample-specific. Please refer to your local assay conditions and test parameters for reference.

PRODUCT OVERVIEW

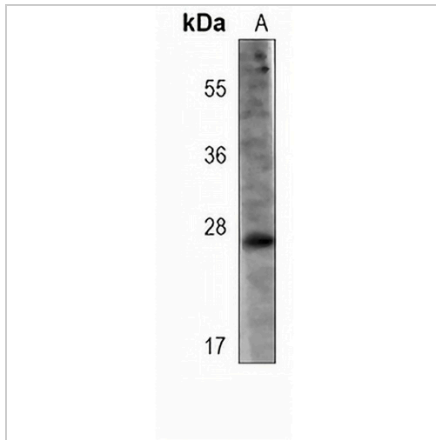
Description	Mouse monoclonal antibody to LYPD6B
Specificity	Recognizes endogenous levels of LYPD6B protein.
Antibody Type	Primary antibody
Immunogen	KLH-conjugated synthetic peptide encompassing a sequence within the center region of human LYPD6B. The exact sequence is proprietary.
Molecular Weight	Predicted: 20 kD; Observed: 20 kD
Form/Buffer	Mouse IgG2b. Supplied in crude ascites with 0.01% sodium azide.
Alternative Names	Ly6/PLAUR domain-containing protein 6B
Gene Symbol	LYPD6B
Entrez Gene	130576(Human); 71897(Mouse)
SwissProt	Q8NI32(Human); Q9D7F2(Mouse)

*AREX continuously optimizes our products. Webpage content may not reflect the latest updates. For inquiries, please contact info@arexbio.com or your local distributor.

*Clone Number, Reactivity, Source/Host and Clonality can be found in the product name and Key Features section above.

DATASHEET**LYPD6B Mouse Monoclonal Antibody(C3952)**

CAT. NO. AMA03564

DATA

Western blot analysis of LYPD6B expression in mouse stomach (A) whole cell lysates.
(Predicted band size: 20 kD; Observed band size: 20 kD)

STORAGE

Store at 4°C short term. For long term storage, store at -20°C, avoiding freeze/thaw cycles.

NOTE

For Research Use Only. Not for diagnostic, therapeutics, prophylactic or in vivo use.