

**DATASHEET**

**CREB3L4 Mouse Monoclonal Antibody(C3957)**

CAT. NO. AMA03569

**KEY FEATURES**

Target	CREB3L4	Source / Host	Mouse
Reactivity	Human, Rat	Clonality	Monoclonal
Applications	WB	Conjugation	Unconjugated
Form / Buffer	Mouse IgG1. Liquid in PBS, pH 7.3, 30% glycerol, and 0.01% sodium azide.	Storage	at-20°C

**BACKGROUND**

Transcriptional activator that may play a role in the unfolded protein response. Binds to the UPR element (UPRE) but not to CRE element. Preferentially binds DNA with to the consensus sequence 5'-T[GT]ACGT[GA][GT]-3' and has transcriptional activation activity from UPRE. Binds to NF-kappa-B site and has transcriptional activation activity from NF-kappa-B-containing regulatory elements .

**APPLICATION**

To ensure optimal assay performance, AREX recommends conducting reagent titration tailored to each testing system for optimal detection results.

WB	1:500 - 1:1000
----	----------------

\*Results are sample-specific. Please refer to your local assay conditions and test parameters for reference.

**PRODUCT OVERVIEW**

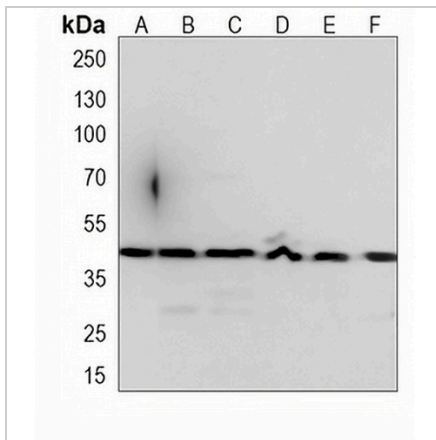
Description	Mouse monoclonal antibody to CREB3L4
Specificity	Recognizes endogenous levels of CREB3L4 protein.
Antibody Type	Primary antibody
Immunogen	Recombinant fusion protein of human CREB3L4. The exact sequence is proprietary.
Purification	This antibody is purified through a protein G column.
Molecular Weight	Predicted: 43 kD; Observed: 40 kD
Form/Buffer	Mouse IgG1. Liquid in PBS, pH 7.3, 30% glycerol, and 0.01% sodium azide.
Alternative Names	AIBZIP; CREB4; JAL; Cyclic AMP-responsive element-binding protein 3-like protein 4; cAMP-responsive element-binding protein 3-like protein 4; Androgen-induced basic leucine zipper protein; AibZIP; Attaching to CRE-like 1; ATCE1; Cyclic AMP-responsive element-binding protein 4; CREB-4; cAMP-responsive element-binding protein 4; Transcript induced in spermiogenesis protein 40; Tisp40; hJAL
Gene Symbol	CREB3L4
Entrez Gene	148327(Human); 310616(Rat)
SwissProt	Q8TEY5(Human); Q5UEM7(Rat)

\*AREX continuously optimizes our products. Webpage content may not reflect the latest updates. For inquiries, please contact [info@arexbio.com](mailto:info@arexbio.com) or your local distributor.

\*Clone Number, Reactivity, Source/Host and Clonality can be found in the product name and Key Features section above.

**DATASHEET****CREB3L4 Mouse Monoclonal Antibody(C3957)**

CAT. NO. AMA03569

**DATA**

Western blot analysis of CREB3L4 expression in Daudi (A), PC3 (B), MCF7 (C), C6 (D), L6 (E), rat brain (F) whole cell lysates. (Predicted band size: 43 kD; Observed band size: 40 kD)

**STORAGE**

Store at 4°C short term. For long term storage, store at -20°C, avoiding freeze/thaw cycles.

**NOTE**

For Research Use Only. Not for diagnostic, therapeutics, prophylactic or in vivo use.