

DATASHEET

WBP2 Mouse Monoclonal Antibody(C3966)

CAT. NO. AMA03578

KEY FEATURES

Target	WBP2	Source / Host	Mouse
Reactivity	Human, Mouse	Clonality	Monoclonal
Applications	WB	Conjugation	Unconjugated
Form / Buffer	Mouse IgG1. Liquid in PBS, pH 7.3, 30% glycerol, and 0.01% sodium azide.	Storage	at-20°C

BACKGROUND

Acts as a transcriptional coactivator of estrogen and progesterone receptors (ESR1 and PGR) upon hormone activation upon hormone activation . In presence of estrogen, binds to ESR1-responsive promoters . Synergizes with YAP1 to enhance PGR activity . Modulates expression of post-synaptic scaffolding proteins via regulation of ESR1, ESR2 and PGR .

APPLICATION

To ensure optimal assay performance, AREX recommends conducting reagent titration tailored to each testing system for optimal detection results.

WB	1:500 - 1:1000
----	----------------

*Results are sample-specific. Please refer to your local assay conditions and test parameters for reference.

PRODUCT OVERVIEW

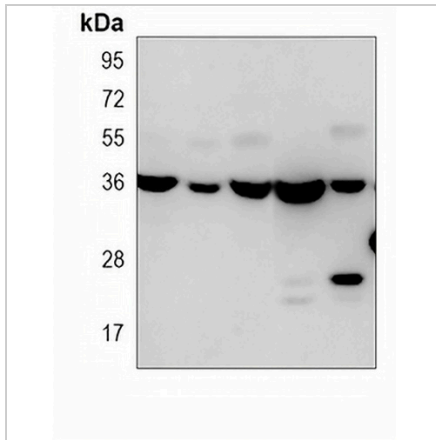
Description	Mouse monoclonal antibody to WBP2
Specificity	Recognizes endogenous levels of WBP2 protein.
Antibody Type	Primary antibody
Immunogen	Recombinant fusion protein of human WBP2. The exact sequence is proprietary.
Purification	This antibody is purified through a protein G column.
Molecular Weight	Predicted: 28 kD; Observed: 36 kD
Form/Buffer	Mouse IgG1. Liquid in PBS, pH 7.3, 30% glycerol, and 0.01% sodium azide.
Alternative Names	WW domain-binding protein 2; WBP-2
Gene Symbol	WBP2
Entrez Gene	23558(Human); 22378(Mouse)
SwissProt	Q969T9(Human); P97765(Mouse)

*AREX continuously optimizes our products. Webpage content may not reflect the latest updates. For inquiries, please contact info@arexbio.com or your local distributor.

*Clone Number, Reactivity, Source/Host and Clonality can be found in the product name and Key Features section above.

DATASHEET**WBP2 Mouse Monoclonal Antibody(C3966)**

CAT. NO. AMA03578

DATA

Western blot analysis of WBP2 expression in mouse heart (A), A549 (B), HL60 (C), 293 (D), A2058 (E) whole cell lysates. (Predicted band size: 28 kD; Observed band size: 36 kD)

STORAGE

Store at 4°C short term. For long term storage, store at -20°C, avoiding freeze/thaw cycles.

NOTE

For Research Use Only. Not for diagnostic, therapeutics, prophylactic or in vivo use.