

## DATASHEET

# PRAS40 Mouse Monoclonal Antibody(C3967)

CAT. NO. AMA03579

### KEY FEATURES

Target	PRAS40	Source / Host	Mouse
Reactivity	Human, Mouse	Clonality	Monoclonal
Applications	WB	Conjugation	Unconjugated
Form / Buffer	Mouse IgG1 kappa. Liquid in PBS, pH 7.3, 30% glycerol, and 0.01% sodium azide.	Storage	at-20°C

### BACKGROUND

Negative regulator of the mechanistic target of rapamycin complex 1 (mTORC1), an evolutionarily conserved central nutrient sensor that stimulates anabolic reactions and macromolecule biosynthesis to promote cellular biomass generation and growth . In absence of insulin and nutrients, AKT1S1 associates with the mTORC1 complex and directly inhibits mTORC1 activity by blocking the MTOR substrate-recruitment site . In response to insulin and nutrients, AKT1S1 dissociates from mTORC1 . Its activity is dependent on its phosphorylation state and binding to 14-3-3 .

### APPLICATION

To ensure optimal assay performance, AREX recommends conducting reagent titration tailored to each testing system for optimal detection results.

WB	1:500 - 1:2000
----	----------------

\*Results are sample-specific. Please refer to your local assay conditions and test parameters for reference.

### PRODUCT OVERVIEW

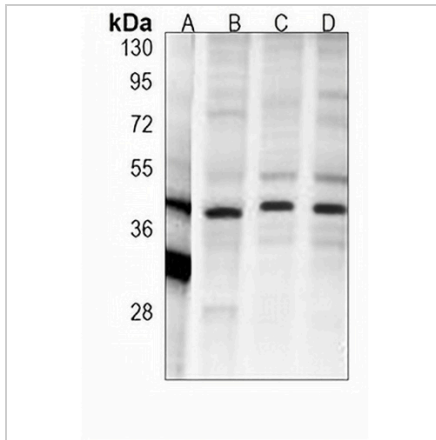
Description	Mouse monoclonal antibody to PRAS40
Specificity	Recognizes endogenous levels of PRAS40 protein.
Antibody Type	Primary antibody
Immunogen	Recombinant fusion protein of human PRAS40. The exact sequence is proprietary.
Purification	This antibody is purified through a protein G column.
Molecular Weight	Predicted: 27 kD; Observed: 40 kD
Form/Buffer	Mouse IgG1 kappa. Liquid in PBS, pH 7.3, 30% glycerol, and 0.01% sodium azide.
Alternative Names	PRAS40; Proline-rich AKT1 substrate 1; 40 kDa proline-rich AKT substrate
Gene Symbol	AKT1S1
Entrez Gene	84335(Human); 67605(Mouse)
SwissProt	Q96B36(Human); Q9D1F4(Mouse)

\*AREX continuously optimizes our products. Webpage content may not reflect the latest updates. For inquiries, please contact [info@arexbio.com](mailto:info@arexbio.com) or your local distributor.

\*Clone Number, Reactivity, Source/Host and Clonality can be found in the product name and Key Features section above.

**DATASHEET****PRAS40 Mouse Monoclonal Antibody(C3967)**

CAT. NO. AMA03579

**DATA**

Western blot analysis of PRAS40 expression in 293 (A), HeLa (B), MCF7 (C), NIH3T3 (D) whole cell lysates. (Predicted band size: 27 kD; Observed band size: 40 kD)

**STORAGE**

Store at 4°C short term. For long term storage, store at -20°C, avoiding freeze/thaw cycles.

**NOTE**

For Research Use Only. Not for diagnostic, therapeutics, prophylactic or in vivo use.