

DATASHEET

GW Mouse Monoclonal Antibody(C3971)

CAT. NO. AMA03583

KEY FEATURES

Target	GW	Source / Host	Mouse
Reactivity	Human	Clonality	Monoclonal
Applications	WB	Conjugation	Unconjugated
Form / Buffer	Mouse IgG1 kappa. Supplied in crude ascites with 0.01% sodium azide.	Storage	at-20°C

BACKGROUND

Serine/threonine kinase that plays a key role in M phase by acting as a regulator of mitosis entry and maintenance . Acts by promoting the inactivation of protein phosphatase 2A (PP2A) during M phase: does not directly inhibit PP2A but acts by mediating phosphorylation and subsequent activation of ARPP19 and ENSA at 'Ser-62' and 'Ser-67', respectively . ARPP19 and ENSA are phosphatase inhibitors that specifically inhibit the PPP2R2D (PR55-delta) subunit of PP2A. Inactivation of PP2A during M phase is essential to keep cyclin-B1-CDK1 activity high . Following DNA damage, it is also involved in checkpoint recovery by being inhibited. Phosphorylates histone protein in vitro; however such activity is unsure in vivo. May be involved in megakaryocyte differentiation.

APPLICATION

To ensure optimal assay performance, AREX recommends conducting reagent titration tailored to each testing system for optimal detection results.

WB	1:1000 - 1:5000
----	-----------------

*Results are sample-specific. Please refer to your local assay conditions and test parameters for reference.

PRODUCT OVERVIEW

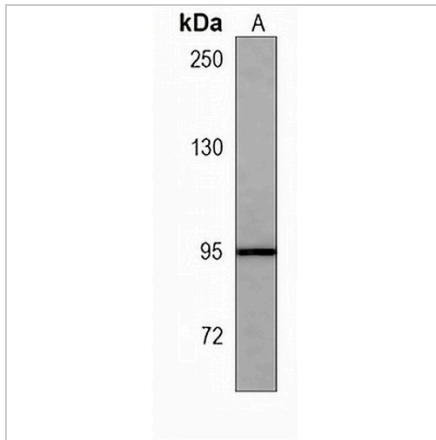
Description	Mouse monoclonal antibody to GW
Specificity	Recognizes endogenous levels of GW protein.
Antibody Type	Primary antibody
Immunogen	Recombinant fusion protein of human GW. The exact sequence is proprietary.
Molecular Weight	Predicted: 97 kD; Observed: 97 kD
Form/Buffer	Mouse IgG1 kappa. Supplied in crude ascites with 0.01% sodium azide.
Alternative Names	GW; GWL; THC2; Serine/threonine-protein kinase greatwall; GW; GWL; hGWL; Microtubule-associated serine/threonine-protein kinase-like; MAST-L
Gene Symbol	MASTL
Entrez Gene	84930(Human)
SwissProt	Q96GX5(Human)

*AREX continuously optimizes our products. Webpage content may not reflect the latest updates. For inquiries, please contact info@arexbio.com or your local distributor.

*Clone Number, Reactivity, Source/Host and Clonality can be found in the product name and Key Features section above.

DATASHEET**GW Mouse Monoclonal Antibody(C3971)**

CAT. NO. AMA03583

DATA

Western blot analysis of GW expression in HepG2 (A) whole cell lysates. (Predicted band size: 97 kD; Observed band size: 97 kD)

STORAGE

Store at 4°C short term. For long term storage, store at -20°C, avoiding freeze/thaw cycles.

NOTE

For Research Use Only. Not for diagnostic, therapeutics, prophylactic or in vivo use.