

DATASHEET

Erbin Mouse Monoclonal Antibody(C3977)

CAT. NO. AMA03589

KEY FEATURES

Target	Erbin	Source / Host	Mouse
Reactivity	Human	Clonality	Monoclonal
Applications	WB	Conjugation	Unconjugated
Form / Buffer	Mouse IgG1 kappa. Liquid in PBS, pH 7.3, 30% glycerol, and 0.01% sodium azide.	Storage	at-20°C

BACKGROUND

Acts as an adapter for the receptor ERBB2, in epithelia. By binding the unphosphorylated 'Tyr-1248' of receptor ERBB2, it may contribute to stabilize this unphosphorylated state . Inhibits NOD2-dependent NF-kappa-B signaling and pro-inflammatory cytokine secretion .

APPLICATION

To ensure optimal assay performance, AREX recommends conducting reagent titration tailored to each testing system for optimal detection results.

WB	1:500 - 1:1000
----	----------------

*Results are sample-specific. Please refer to your local assay conditions and test parameters for reference.

PRODUCT OVERVIEW

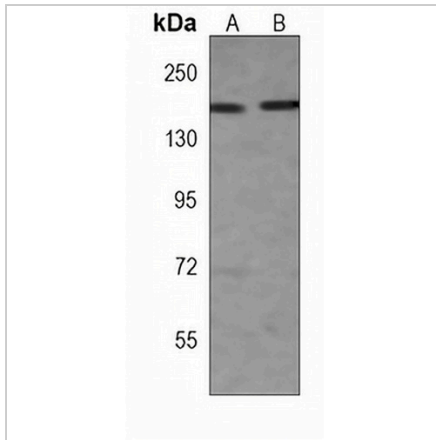
Description	Mouse monoclonal antibody to Erbin
Specificity	Recognizes endogenous levels of Erbin protein.
Antibody Type	Primary antibody
Immunogen	Recombinant fusion protein of human Erbin. The exact sequence is proprietary.
Purification	This antibody is purified through a protein G column.
Molecular Weight	Predicted: 158 kD; Observed: 158 kD
Form/Buffer	Mouse IgG1 kappa. Liquid in PBS, pH 7.3, 30% glycerol, and 0.01% sodium azide.
Alternative Names	ERBIN; KIAA1225; LAP2; Protein LAP2; Densin-180-like protein; ErbB2-interacting protein; Erbin
Gene Symbol	ERBB2IP
Entrez Gene	55914(Human)
SwissProt	Q96RT1(Human)

*AREX continuously optimizes our products. Webpage content may not reflect the latest updates. For inquiries, please contact info@arexbio.com or your local distributor.

*Clone Number, Reactivity, Source/Host and Clonality can be found in the product name and Key Features section above.

DATASHEET**Erbin Mouse Monoclonal Antibody(C3977)**

CAT. NO. AMA03589

DATA

Western blot analysis of Erbin expression in HeLa (A), HepG2 (B) whole cell lysates.
(Predicted band size: 158 kD; Observed band size: 158 kD)

STORAGE

Store at 4°C short term. For long term storage, store at -20°C, avoiding freeze/thaw cycles.

NOTE

For Research Use Only. Not for diagnostic, therapeutics, prophylactic or in vivo use.