

**DATASHEET**

**Latexin Mouse Monoclonal Antibody(C3986)**

CAT. NO. AMA03598

**KEY FEATURES**

|               |  |               |              |
|---------------|--|---------------|--------------|
| Target        | Latexin  | Source / Host | Mouse        |
| Reactivity    | Human, Mouse   | Clonality     | Monoclonal   |
| Applications  | WB   | Conjugation   | Unconjugated |
| Form / Buffer | Mouse IgG1 kappa. Liquid in PBS, pH 7.3, 30% glycerol, and 0.01% sodium azide. | Storage       | at-20°C      |

**BACKGROUND**

Hardly reversible, non-competitive, and potent inhibitor of CPA1, CPA2 and CPA4. May play a role in inflammation.

**APPLICATION**

To ensure optimal assay performance, AREX recommends conducting reagent titration tailored to each testing system for optimal detection results.

|    |                |
|----|----------------|
| WB | 1:500 - 1:1000 |
|----|----------------|

\*Results are sample-specific. Please refer to your local assay conditions and test parameters for reference.

**PRODUCT OVERVIEW**

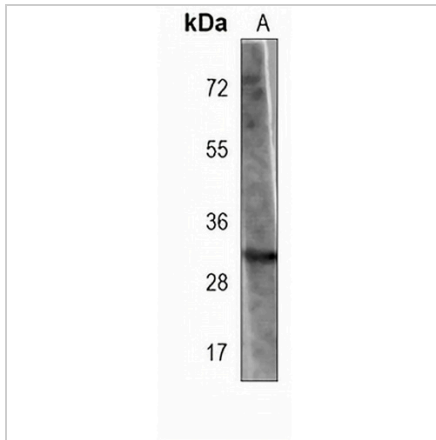
|                   |  |
|-------------------|--|
| Description       | Mouse monoclonal antibody to Latexin   |
| Specificity       | Recognizes endogenous levels of Latexin protein.   |
| Antibody Type     | Primary antibody   |
| Immunogen         | Recombinant fusion protein of human Latexin. The exact sequence is proprietary.                          |
| Purification      | This antibody is purified through a protein G column.  |
| Molecular Weight  | Predicted: 25 kD; Observed: 30 kD  |
| Form/Buffer       | Mouse IgG1 kappa. Liquid in PBS, pH 7.3, 30% glycerol, and 0.01% sodium azide.                           |
| Alternative Names | Latexin; Endogenous carboxypeptidase inhibitor; ECI; Protein MUM; Tissue carboxypeptidase inhibitor; TCI |
| Gene Symbol       | LXN  |
| Entrez Gene       | 56925(Human); 17035(Mouse)   |
| SwissProt         | Q9BS40(Human); P70202(Mouse)   |

\*AREX continuously optimizes our products. Webpage content may not reflect the latest updates. For inquiries, please contact [info@arexbio.com](mailto:info@arexbio.com) or your local distributor.

\*Clone Number, Reactivity, Source/Host and Clonality can be found in the product name and Key Features section above.

**DATASHEET****Latexin Mouse Monoclonal Antibody(C3986)**

CAT. NO. AMA03598

**DATA**

Western blot analysis of Latexin expression in MCF7 (A) whole cell lysates. (Predicted band size: 25 kD; Observed band size: 30 kD)

**STORAGE**

Store at 4°C short term. For long term storage, store at -20°C, avoiding freeze/thaw cycles.

**NOTE**

For Research Use Only. Not for diagnostic, therapeutics, prophylactic or in vivo use.