

**DATASHEET**

**FUCA2 Mouse Monoclonal Antibody(C3987)**

CAT. NO. AMA03599

**KEY FEATURES**

Target	FUCA2	Source / Host	Mouse
Reactivity	Human	Clonality	Monoclonal
Applications	WB	Conjugation	Unconjugated
Form / Buffer	Mouse IgG1 kappa. Liquid in PBS, pH 7.3, 30% glycerol, and 0.01% sodium azide.	Storage	at-20°C

**BACKGROUND**

Alpha-L-fucosidase is responsible for hydrolyzing the alpha-1,6-linked fucose joined to the reducing-end N-acetylglucosamine of the carbohydrate moieties of glycoproteins.

**APPLICATION**

To ensure optimal assay performance, AREX recommends conducting reagent titration tailored to each testing system for optimal detection results.

WB	1:500 - 1:1000
----	----------------

\*Results are sample-specific. Please refer to your local assay conditions and test parameters for reference.

**PRODUCT OVERVIEW**

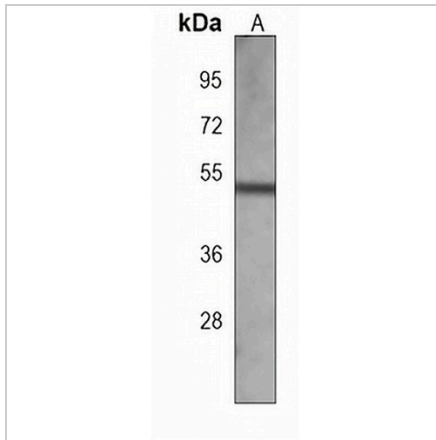
Description	Mouse monoclonal antibody to FUCA2
Specificity	Recognizes endogenous levels of FUCA2 protein.
Antibody Type	Primary antibody
Immunogen	Recombinant fusion protein of human FUCA2. The exact sequence is proprietary.
Purification	This antibody is purified through a protein G column.
Molecular Weight	Predicted: 54 kD; Observed: 54 kD
Form/Buffer	Mouse IgG1 kappa. Liquid in PBS, pH 7.3, 30% glycerol, and 0.01% sodium azide.
Alternative Names	Plasma alpha-L-fucosidase; Alpha-L-fucoside fucohydrolase 2; Alpha-L-fucosidase 2
Gene Symbol	FUCA2
Entrez Gene	2519(Human)
SwissProt	Q9BTY2(Human)

\*AREX continuously optimizes our products. Webpage content may not reflect the latest updates. For inquiries, please contact [info@arexbio.com](mailto:info@arexbio.com) or your local distributor.

\*Clone Number, Reactivity, Source/Host and Clonality can be found in the product name and Key Features section above.

**DATASHEET****FUCA2 Mouse Monoclonal Antibody(C3987)**

CAT. NO. AMA03599

**DATA**

Western blot analysis of FUCA2 expression in A2058 (A) whole cell lysates. (Predicted band size: 54 kD; Observed band size: 54 kD)

**STORAGE**

Store at 4°C short term. For long term storage, store at -20°C, avoiding freeze/thaw cycles.

**NOTE**

For Research Use Only. Not for diagnostic, therapeutics, prophylactic or in vivo use.