

**DATASHEET**

**RAB1B Mouse Monoclonal Antibody(C3995)**

CAT. NO. AMA03607

**KEY FEATURES**

Target	RAB1B	Source / Host	Mouse
Reactivity	Human	Clonality	Monoclonal
Applications	WB, FC	Conjugation	Unconjugated
Form / Buffer	Mouse IgG1 kappa. Liquid in PBS, pH 7.3, 30% glycerol, and 0.01% sodium azide.	Storage	at-20°C

**BACKGROUND**

The small GTPases Rab are key regulators of intracellular membrane trafficking, from the formation of transport vesicles to their fusion with membranes . Rabs cycle between an inactive GDP-bound form and an active GTP-bound form that is able to recruit to membranes different set of downstream effectors directly responsible for vesicle formation, movement, tethering and fusion . Plays a role in the initial events of the autophagic vacuole development which take place at specialized regions of the endoplasmic reticulum . Regulates vesicular transport between the endoplasmic reticulum and successive Golgi compartments . Required to modulate the compacted morphology of the Golgi . Promotes the recruitment of lipid phosphatase MTMR6 to the endoplasmic reticulum-Golgi intermediate compartment .

**APPLICATION**

To ensure optimal assay performance, AREX recommends conducting reagent titration tailored to each testing system for optimal detection results.

WB	1:500 - 1:2000
FC	1:10 - 1:50

\*Results are sample-specific. Please refer to your local assay conditions and test parameters for reference.

**PRODUCT OVERVIEW**

Description	Mouse monoclonal antibody to RAB1B
Specificity	Recognizes endogenous levels of RAB1B protein.
Antibody Type	Primary antibody
Immunogen	Recombinant fusion protein of human RAB1B. The exact sequence is proprietary.
Purification	This antibody is purified through a protein G column.
Molecular Weight	Predicted: 22 kD; Observed: 22 kD
Form/Buffer	Mouse IgG1 kappa. Liquid in PBS, pH 7.3, 30% glycerol, and 0.01% sodium azide.
Alternative Names	Ras-related protein Rab-1B
Gene Symbol	RAB1B
Entrez Gene	81876(Human)
SwissProt	Q9H0U4(Human)

\*AREX continuously optimizes our products. Webpage content may not reflect the latest updates. For inquiries, please contact [info@arexbio.com](mailto:info@arexbio.com) or your local distributor.

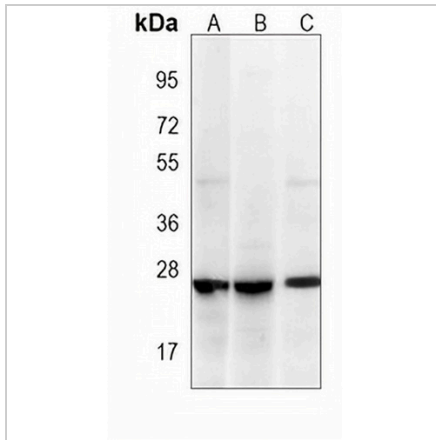
\*Clone Number, Reactivity, Source/Host and Clonality can be found in the product name and Key Features section above.

**DATASHEET**

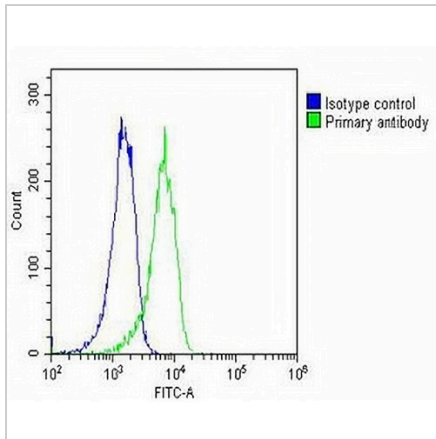
**RAB1B Mouse Monoclonal Antibody(C3995)**

CAT. NO. AMA03607

**DATA**



Western blot analysis of RAB1B expression in HeLa (A), A431 (B), U2OS (C) whole cell lysates. (Predicted band size: 22 kD; Observed band size: 22 kD)



Flow cytometric analysis of A431 cells using Anti-RAB1B Antibody. The cells were fixed with 2% paraformaldehyde (10 min) and then permeabilized with 90% methanol for 10 min. The cells were incubated in 2% bovine serum albumin to block non-specific protein-protein interactions followed by the antibody at 37 °C for 60 min. The secondary antibody Goat Anti-Mouse IgG (H&L) - AREX® Fluor 488 was incubated at 37 °C for 40 min. Isotype control antibody (blue line) was used under the same condition.

**STORAGE**

Store at 4°C short term. For long term storage, store at -20°C, avoiding freeze/thaw cycles.

**NOTE**

For Research Use Only. Not for diagnostic, therapeutics, prophylactic or in vivo use.