

DATASHEET

CARD9 Mouse Monoclonal Antibody(C3998)

CAT. NO. AMA03610

KEY FEATURES

Target	CARD9	Source / Host	Mouse
Reactivity	Human	Clonality	Monoclonal
Applications	WB	Conjugation	Unconjugated
Form / Buffer	Mouse IgG1 kappa. Liquid in PBS, pH 7.3, 30% glycerol, and 0.01% sodium azide.	Storage	at-20°C

BACKGROUND

Adapter protein that plays a key role in innate immune response against fungi by forming signaling complexes downstream of C-type lectin receptors . CARD9-mediated signals are essential for antifungal immunity against a subset of fungi from the phylum Ascomycota . Transduces signals in myeloid cells downstream of C-type lectin receptors CLEC7A (dectin-1), CLEC6A (dectin-2) and CLEC4E (Mincle), which detect pathogen-associated molecular pattern metabolites (PAMPs), such as fungal carbohydrates, and trigger CARD9 activation .

APPLICATION

To ensure optimal assay performance, AREX recommends conducting reagent titration tailored to each testing system for optimal detection results.

WB	1:500 - 1:1000
----	----------------

*Results are sample-specific. Please refer to your local assay conditions and test parameters for reference.

PRODUCT OVERVIEW

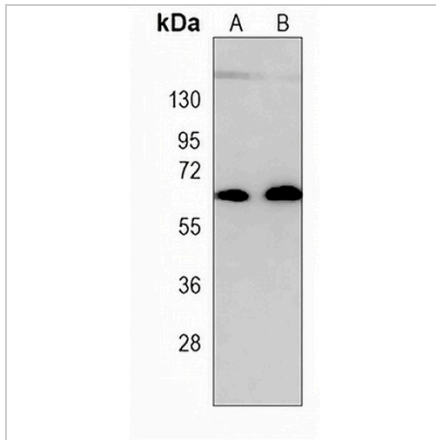
Description	Mouse monoclonal antibody to CARD9
Specificity	Recognizes endogenous levels of CARD9 protein.
Antibody Type	Primary antibody
Immunogen	Recombinant fusion protein of human CARD9. The exact sequence is proprietary.
Purification	This antibody is purified through a protein G column.
Molecular Weight	Predicted: 62 kD; Observed: 64 kD
Form/Buffer	Mouse IgG1 kappa. Liquid in PBS, pH 7.3, 30% glycerol, and 0.01% sodium azide.
Alternative Names	Caspase recruitment domain-containing protein 9; hCARD9
Gene Symbol	CARD9
Entrez Gene	64170(Human)
SwissProt	Q9H257(Human)

*AREX continuously optimizes our products. Webpage content may not reflect the latest updates. For inquiries, please contact info@arexbio.com or your local distributor.

*Clone Number, Reactivity, Source/Host and Clonality can be found in the product name and Key Features section above.

DATASHEET**CARD9 Mouse Monoclonal Antibody(C3998)**

CAT. NO. AMA03610

DATA

Western blot analysis of CARD9 expression in K562 (A), HL60 (B) whole cell lysates.
(Predicted band size: 62 kD; Observed band size: 64 kD)

STORAGE

Store at 4°C short term. For long term storage, store at -20°C, avoiding freeze/thaw cycles.

NOTE

For Research Use Only. Not for diagnostic, therapeutics, prophylactic or in vivo use.