

DATASHEET

Smurf2 Mouse Monoclonal Antibody(C4009)

CAT. NO. AMA03621

KEY FEATURES

Target	Smurf2	Source / Host	Mouse
Reactivity	Human	Clonality	Monoclonal
Applications	WB	Conjugation	Unconjugated
Form / Buffer	Mouse IgG1 kappa. Liquid in PBS, pH 7.3, 30% glycerol, and 0.01% sodium azide.	Storage	at-20°C

BACKGROUND

E3 ubiquitin-protein ligase which accepts ubiquitin from an E2 ubiquitin-conjugating enzyme in the form of a thioester and then directly transfers the ubiquitin to targeted substrates . Interacts with SMAD7 to trigger SMAD7-mediated transforming growth factor beta/TGF-beta receptor ubiquitin-dependent degradation, thereby down-regulating TGF-beta signaling . In addition, interaction with SMAD7 activates autocatalytic degradation, which is prevented by interaction with AIMP1 . Also forms a stable complex with TGF-beta receptor-mediated phosphorylated SMAD1, SMAD2 and SMAD3, and targets SMAD1 and SMAD2 for ubiquitination and proteasome-mediated degradation . SMAD2 may recruit substrates, such as SNON, for ubiquitin-dependent degradation .

APPLICATION

To ensure optimal assay performance, AREX recommends conducting reagent titration tailored to each testing system for optimal detection results.

WB	1:1000 - 1:2000
----	-----------------

*Results are sample-specific. Please refer to your local assay conditions and test parameters for reference.

PRODUCT OVERVIEW

Description	Mouse monoclonal antibody to Smurf2
Specificity	Recognizes endogenous levels of Smurf2 protein.
Antibody Type	Primary antibody
Immunogen	Recombinant fusion protein of human Smurf2. The exact sequence is proprietary.
Purification	This antibody is purified through a protein G column.
Molecular Weight	Predicted: 86 kD; Observed: 86 kD
Form/Buffer	Mouse IgG1 kappa. Liquid in PBS, pH 7.3, 30% glycerol, and 0.01% sodium azide.
Alternative Names	E3 ubiquitin-protein ligase SMURF2; hSMURF2; SMAD ubiquitination regulatory factor 2; SMAD-specific E3 ubiquitin-protein ligase 2
Gene Symbol	SMURF2
Entrez Gene	64750(Human)
SwissProt	Q9HAU4(Human)

*AREX continuously optimizes our products. Webpage content may not reflect the latest updates. For inquiries, please contact info@arexbio.com or your local distributor.

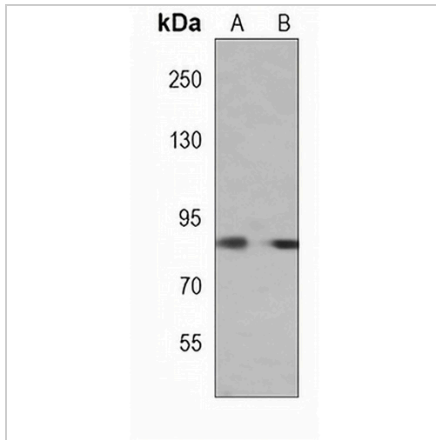
*Clone Number, Reactivity, Source/Host and Clonality can be found in the product name and Key Features section above.

DATASHEET

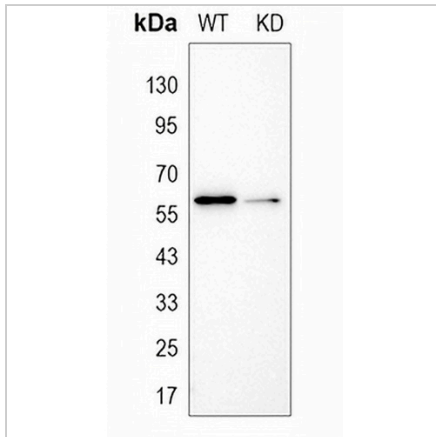
Smurf2 Mouse Monoclonal Antibody(C4009)

CAT. NO. AMA03621

DATA



Western blot analysis of Smurf2 expression in MDAMB231 (A), U2OS (B) whole cell lysates. (Predicted band size: 86 kD; Observed band size: 86 kD)



Western blot analysis of Smurf2 expression in wild type (WT) and knockdown (KD) HeLa cell lysates.

STORAGE

Store at 4°C short term. For long term storage, store at -20°C, avoiding freeze/thaw cycles.

NOTE

For Research Use Only. Not for diagnostic, therapeutics, prophylactic or in vivo use.